



ELECTRONIC COPY

LG735530811
Report verification at igi.org



September 25, 2025

IGI Report Number **LG735530811**

Description **LABORATORY GROWN DIAMOND**

Shape and Cutting Style **ROUND BRILLIANT**

Measurements **9.80 - 9.89 X 5.92 MM**

GRADING RESULTS

Carat Weight **3.53 CARATS**

Color Grade **FANCY VIVID BLUE**

Clarity Grade **VVS 2**

Cut Grade **IDEAL**

September 25, 2025
IGI Report Number **LG735530811**
Description **LABORATORY GROWN DIAMOND**
Shape and Cutting Style **ROUND BRILLIANT**
Measurements **9.80 - 9.89 X 5.92 MM**

GRADING RESULTS

Carat Weight **3.53 CARATS**

Color Grade **FANCY VIVID BLUE**

Clarity Grade **VVS 2**

Cut Grade **IDEAL**

ADDITIONAL GRADING INFORMATION

Polish **EXCELLENT**

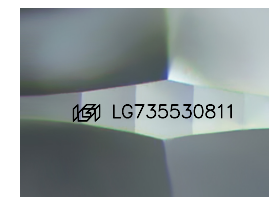
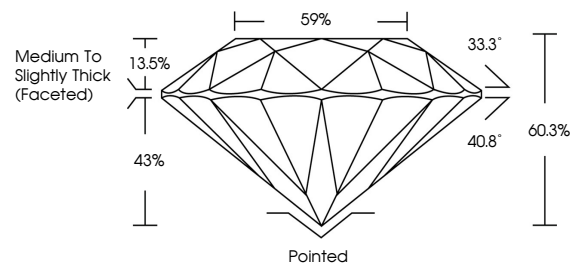
Symmetry **EXCELLENT**

Fluorescence **NONE**

Inscription(s) **LG735530811**

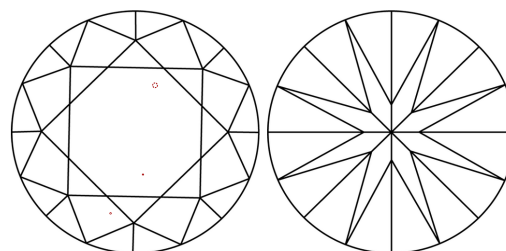
Comments: This Laboratory Grown Diamond was created by Chemical Vapor Deposition (CVD) growth process.
Indications of post-growth treatment.

PROPORTIONS



Sample Image Used

CLARITY CHARACTERISTICS



KEY TO SYMBOLS

Red symbols indicate internal characteristics.
Green symbols indicate external characteristics.

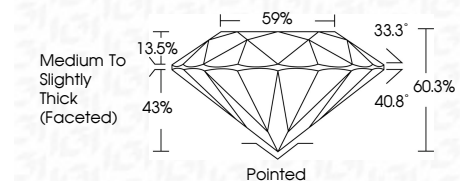
COLOR

D E F G H I J Faint Very Light Light

CLARITY

IF VS¹⁻² VS¹⁻² SI¹⁻² I¹⁻³

Internally Flawless Very Very Slightly Included Very Slightly Included Slightly Included Included



ADDITIONAL GRADING INFORMATION

Polish **EXCELLENT**

Symmetry **EXCELLENT**

Fluorescence **NONE**

Inscription(s) **LG735530811**

Comments: This Laboratory Grown Diamond was created by Chemical Vapor Deposition (CVD) growth process.
Indications of post-growth treatment.



IGI



September 25, 2025	3.53 CARATS	Pointed
IGI Report No LG735530811	FANCY VIVID BLUE	EXCELLENT
ROUND BRILLIANT	VVS 2	EXCELLENT
9.80 - 9.89 X 5.92 MM	IDEAL	NONE
Carat Weight	60.3%	None
Color Grade	59%	None
Clarity Grade	Medium To Slightly Thick (Faceted)	None
Cut Grade		None
Depth		None
Table		None
Grade		None
Polish		None
Symmetry		None
Fluorescence		None
Inscription(s)		None
Comments:		None
This Laboratory Grown Diamond was created by Chemical Vapor Deposition (CVD) growth process. Indications of post-growth treatment.		