



ELECTRONIC COPY

LG735532553
Report verification at igi.org



September 18, 2025
IGI Report Number **LG735532553**
Description **LABORATORY GROWN DIAMOND**
Shape and Cutting Style **CUSHION MODIFIED BRILLIANT**
Measurements **11.61 X 8.65 X 6.02 MM**
GRADING RESULTS
Carat Weight **5.56 CARATS**
Color Grade **E**
Clarity Grade **VS 1**

LABORATORY GROWN DIAMOND REPORT

September 18, 2025
IGI Report Number **LG735532553**
Description **LABORATORY GROWN DIAMOND**
Shape and Cutting Style **CUSHION MODIFIED BRILLIANT**
Measurements **11.61 X 8.65 X 6.02 MM**

GRADING RESULTS

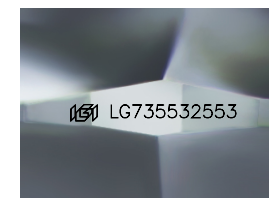
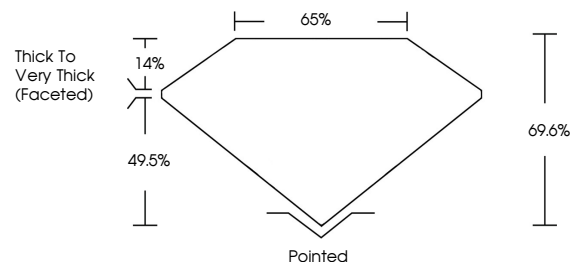
Carat Weight **5.56 CARATS**
Color Grade **E**
Clarity Grade **VS 1**

ADDITIONAL GRADING INFORMATION

Polish **EXCELLENT**
Symmetry **EXCELLENT**
Fluorescence **NONE**
Inscription(s) **LG735532553**

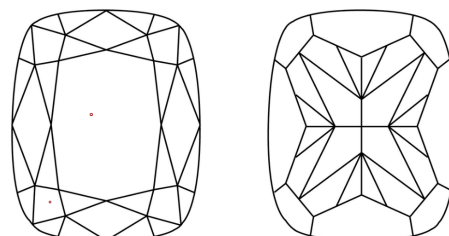
Comments: This Laboratory Grown Diamond was created by Chemical Vapor Deposition (CVD) growth process.
Type IIa

PROPORTIONS



Sample Image Used

CLARITY CHARACTERISTICS



KEY TO SYMBOLS

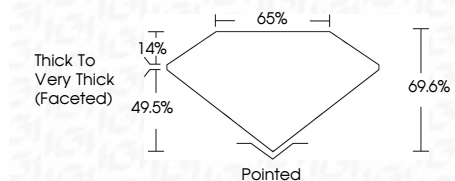
Red symbols indicate internal characteristics.
Green symbols indicate external characteristics.

COLOR

D E F G H I J Faint Very Light Light

CLARITY

IF	WS ¹⁻²	VS ¹⁻²	SI ¹⁻²	I ¹⁻³
Internally Flawless	Very Very Slightly Included	Very Slightly Included	Slightly Included	Included



ADDITIONAL GRADING INFORMATION

Polish **EXCELLENT**
Symmetry **EXCELLENT**
Fluorescence **NONE**
Inscription(s) **LG735532553**
Comments: This Laboratory Grown Diamond was created by Chemical Vapor Deposition (CVD) growth process.
Type IIa



September 18, 2025
IGI Report No LG735532553
CUSHION MODIFIED BRILLIANT
5.56 CARATS
E
5.56 CARATS
Carat Weight
Color Grade
Clarity Grade
Depth
Table
Girdle
Thick to Very Thick (Faceted)
Culet
Polish
Symmetry
Fluorescence
Inscription(s)
VS 1
69.6%
65%
Pointed
EXCELLENT
EXCELLENT
NONE
 LG735532553
Comments: This Laboratory Grown Diamond was created by Chemical Vapor Deposition (CVD) growth process.
Type IIa