



ELECTRONIC COPY

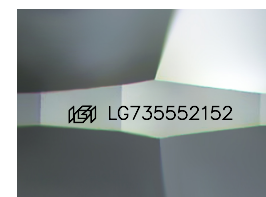
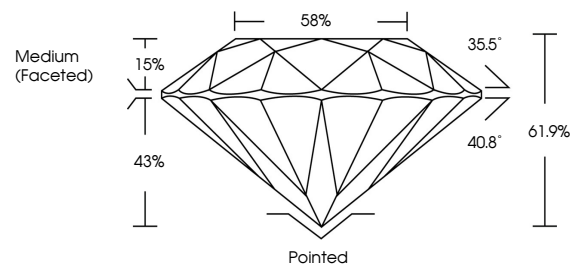
LG735552152
Report verification at igi.org



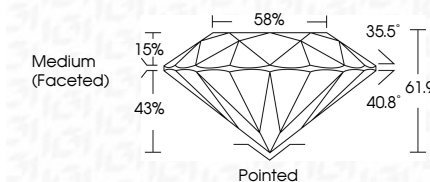
September 18, 2025
IGI Report Number **LG735552152**
Description **LABORATORY GROWN DIAMOND**
Shape and Cutting Style **ROUND BRILLIANT**
Measurements **6.47 - 6.51 X 4.02 MM**
GRADING RESULTS
Carat Weight **1.05 CARAT**
Color Grade **F**
Clarity Grade **INTERNALLY FLAWLESS**
Cut Grade **IDEAL**

September 18, 2025
IGI Report Number **LG735552152**
Description **LABORATORY GROWN DIAMOND**
Shape and Cutting Style **ROUND BRILLIANT**
Measurements **6.47 - 6.51 X 4.02 MM**
GRADING RESULTS
Carat Weight **1.05 CARAT**
Color Grade **F**
Clarity Grade **INTERNALLY FLAWLESS**
Cut Grade **IDEAL**

PROPORTIONS



Sample Image Used



ADDITIONAL GRADING INFORMATION

Polish **EXCELLENT**
Symmetry **EXCELLENT**
Fluorescence **NONE**
Inscription(s) **IGI LG735552152**

Comments: This Laboratory Grown Diamond was created by Chemical Vapor Deposition (CVD) growth process. Type IIa

COLOR

D E F G H I J Faint Very Light Light

CLARITY

IF	VS ¹⁻²	VS ¹⁻²	SI ¹⁻²	I ¹⁻³
Internally Flawless	Very Very Slightly Included	Very Slightly Included	Slightly Included	Included

ADDITIONAL GRADING INFORMATION

Polish **EXCELLENT**
Symmetry **EXCELLENT**
Fluorescence **NONE**
Inscription(s) **IGI LG735552152**
Comments: This Laboratory Grown Diamond was created by Chemical Vapor Deposition (CVD) growth process. Type IIa



IGI



September 18, 2025
IGI Report No LG735552152
ROUND BRILLIANT
6.47 - 6.51 X 4.02 MM
1.05 CARAT
Color Grade **F**
Clarity Grade **IF**
Depth **61.9%**
Table **58%**
Girdle **Medium (Faceted)**
Culet **Pointed**
Polish **EXCELLENT**
Symmetry **EXCELLENT**
Fluorescence **NONE**
Inscriptions(s) **IGI LG735552152**
Comments: This Laboratory Grown Diamond was created by Chemical Vapor Deposition (CVD) growth process. Type IIa