



**ELECTRONIC COPY**

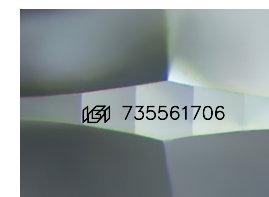
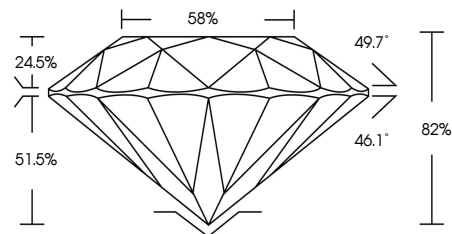
735561706  
Report verification at [igi.org](http://igi.org)



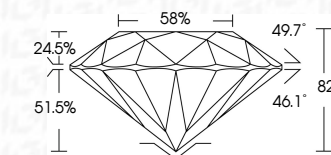
November 7, 2025  
IGI Report Number **735561706**  
Description **NATURAL DIAMOND**  
Shape and Cutting Style **ROUND BRILLIANT**  
Measurements **6.29 - 6.37 X 5.19 MM**  
**GRADING RESULTS**  
Carat Weight **1.36 CARAT**  
Color Grade **BLACK, TREATED COLOR**

November 7, 2025  
IGI Report Number **735561706**  
Description **NATURAL DIAMOND**  
Shape and Cutting Style **ROUND BRILLIANT**  
Measurements **6.29 - 6.37 X 5.19 MM**  
**GRADING RESULTS**  
Carat Weight **1.36 CARAT**  
Color Grade **BLACK, TREATED COLOR**  
**ADDITIONAL GRADING INFORMATION**  
Fluorescence **NONE**  
Inscription(s) **735561706**

**PROPORTIONS**



Sample Image Used



**COLOR**

D - F	G - J	K - M	N - R	S - Z	FANCY
Colorless	Near Colorless	Slightly Tinted	Very Light Color	Light Color	

**CLARITY**

IF	VVS <sup>1-2</sup>	VS <sup>1-2</sup>	SI <sup>1-2</sup>	I <sup>1-3</sup>
Internally Flawless	Very Very Slightly Included	Very Slightly Included	Slightly Included	Included

**ADDITIONAL GRADING INFORMATION**

Fluorescence **NONE**  
Inscription(s) **735561706**



**IGI**



November 7, 2025  
IGI Report No 735561706  
**ROUND BRILLIANT**  
6.29 - 6.37 X 5.19 MM  
1.36 CARAT  
Color Grade **BLACK, TREATED COLOR**  
Depth 82%  
Table 58%  
Girdle 68%  
Culet NONE  
Fluorescence NONE  
Inscriptions(s) 735561706