



ELECTRONIC COPY

LABORATORY GROWN DIAMOND REPORT

September 25, 2025	
IGI Report Number	LG735569192
Description	LABORATORY GROWN DIAMOND
Shape and Cutting Style	ROUND BRILLIANT
Measurements	9.32 - 9.36 X 5.73 MM

GRADING RESULTS

Carat Weight	3.05 CARATS
Color Grade	E
Clarity Grade	VVS 2
Cut Grade	IDEAL

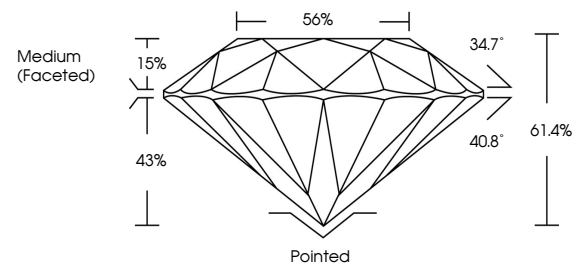
ADDITIONAL GRADING INFORMATION

Polish	EXCELLENT
Symmetry	EXCELLENT
Fluorescence	NONE
Inscription(s)	 LG735569192

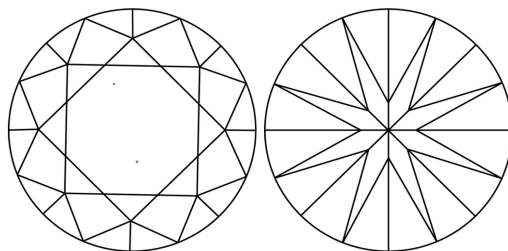
Comments: This Laboratory Grown Diamond was created by Chemical Vapor Deposition (CVD) growth process.
Type IIa

LG735569192
Report verification at igi.org

PROPORTIONS

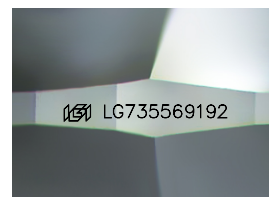


CLARITY CHARACTERISTICS



KEY TO SYMBOLS

Red symbols indicate internal characteristics.
Green symbols indicate external characteristics.



Sample Image Used

COLOR

D E F G H I J Faint Very Light Light

CLARITY

IF VS¹⁻² VS¹⁻² S¹⁻² |¹⁻³

Internally Flawless	Very Very Slightly Included	Very Slightly Included	Slightly Included	Included
------------------------	--------------------------------	---------------------------	----------------------	----------

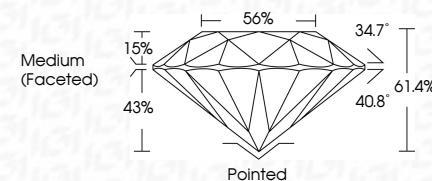
LABORATORY GROWN DIAMOND REPORT



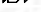
September 25, 2025	
IGI Report Number	LG735569192
Description	LABORATORY GROWN DIAMOND
Shape and Cutting Style	ROUND BRILLIANT
Measurements	9.32 - 9.36 X 5.73 MM

GRADING RESULTS

Carat Weight	3.05 CARATS
Color Grade	E
Clarity Grade	VVS 2
Cut Grade	IDEAL



ADDITIONAL GRADING INFORMATION

Polish	EXCELLENT
Symmetry	EXCELLENT
Fluorescence	NONE
Inscription(s)	 LG73569192
<p>Comments: This Laboratory Grown Diamond was created by Chemical Vapor Deposition (CVD) growth process.</p> <p>Type IIa</p>	



IG



© IGI 2020, International Gemological Institute

FD - 10 20



THIS DOCUMENT WAS PRODUCED WITH THE FOLLOWING SECURITY MEASURES: SPECIAL DOCUMENT PAPER, INK SCREENS, WATERMARK, BACKGROUND DESIGNS, HOLOGRAM AND OTHER SECURITY FEATURES NOT LISTED AND DO EXCEED DOCUMENT SECURITY INDUSTRY GUIDELINES

September 25, 2025
IGI Report No LG735569192
ROUND BRILLIANT

9.32 - 9.36 X 5.73 MM	3.05 CARATS	
Carat Weight		
Color Grade	VVS 2	Polished
Clarity Grade	IDEAL	EXCELLENT
Cut Grade	61.4%	EXCELLENT
Dapth	56%	NONE
Table		Fluorescence
Girdle	Medium (Faceted)	Insufficient
Culet		
Polish		
Symmetry		
Fluorescence		
Insufficient		

Comments:
This Laboratory Grown Diamond was created by Chemical Vapor Deposition (CVD) growth process.



www.igi.org