



**ELECTRONIC COPY**

## LABORATORY GROWN DIAMOND REPORT

LG735588311  
Report verification at [igi.org](https://www.igi.org)

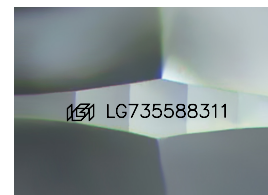
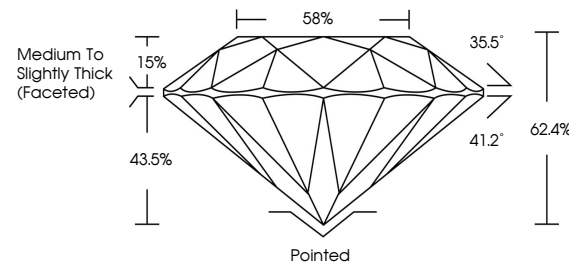
|                         |                          |
|-------------------------|--------------------------|
| September 22, 2025      |                          |
| IGI Report Number       | LG735588311              |
| Description             | LABORATORY GROWN DIAMOND |
| Shape and Cutting Style | ROUND BRILLIANT          |
| Measurements            | 9.21 - 9.24 X 5.76 MM    |
| GRADING RESULTS         |                          |
| Carat Weight            | 3.04 CARATS              |
| Color Grade             | E                        |
| Clarity Grade           | VVS 2                    |
| Cut Grade               | IDEAL                    |

### ADDITIONAL GRADING INFORMATION

|                |                |
|----------------|----------------|
| Polish         | EXCELLENT      |
| Symmetry       | EXCELLENT      |
| Fluorescence   | NONE           |
| Inscription(s) | 15 LG735588311 |

Comments: This Laboratory Grown Diamond was created by Chemical Vapor Deposition (CVD) growth process.  
Type IIa

## PROPORTIONS



Sample Image Used

## COLOR

D E F G H I J Faint Very Light Light

## CLARITY

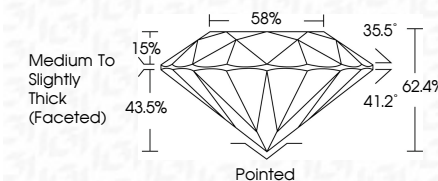
IF                      WS<sup>1-2</sup>                      VS<sup>1-2</sup>                      SI<sup>1-2</sup>                      |<sup>1-3</sup>

|                        |                                |                           |                      |          |
|------------------------|--------------------------------|---------------------------|----------------------|----------|
| Internally<br>Flawless | Very Very<br>Slightly Included | Very<br>Slightly Included | Slightly<br>Included | Included |
|------------------------|--------------------------------|---------------------------|----------------------|----------|

## LABORATORY GROWN DIAMOND REPORT



|                         |                          |
|-------------------------|--------------------------|
| September 22, 2025      |                          |
| IGI Report Number       | LG735588311              |
| Description             | LABORATORY GROWN DIAMOND |
| Shape and Cutting Style | ROUND BRILLIANT          |
| Measurements            | 9.21 - 9.24 X 5.76 MM    |
| GRADING RESULTS         |                          |
| Carat Weight            | 3.04 CARATS              |
| Color Grade             | E                        |
| Clarity Grade           | VVS 2                    |
| Cut Grade               | IDEAL                    |



### ADDITIONAL GRADING INFORMATION

|                                                                                                        |                                                                                                 |
|--------------------------------------------------------------------------------------------------------|-------------------------------------------------------------------------------------------------|
| Polish                                                                                                 | EXCELLENT                                                                                       |
| Symmetry                                                                                               | EXCELLENT                                                                                       |
| Fluorescence                                                                                           | NONE                                                                                            |
| Inscription(s)                                                                                         |  LG735588311 |
| Comments: This Laboratory Grown Diamond was created by Chemical Vapor Deposition (CVD) growth process. |                                                                                                 |
| Type IIa                                                                                               |                                                                                                 |



© IGI 2020, International Gemological Institute

FD - 10 20



THIS DOCUMENT WAS PRODUCED WITH THE FOLLOWING SECURITY MEASURES: SPECIAL DOCUMENT PAPER, INK SCREENS, WATERMARK, BACKGROUND DESIGNS, HOLOGRAM AND OTHER SECURITY FEATURES NOT LISTED AND DO EXCEED DOCUMENT SECURITY INDUSTRY GUIDELINES

**www.igi.org**

September 22, 2025  
ICI Report No LG735588311  
ROUND BRILLIANT

|                       |  |                                    |  |
|-----------------------|--|------------------------------------|--|
| 9.21 - 9.24 X 5.75 MM |  | 3.04 CARATS                        |  |
| Carat Weight          |  | VVS 2                              |  |
| Color Grade           |  | IDEAL                              |  |
| Clarity Grade         |  | 62.4%                              |  |
| Cut Grade             |  | 58%                                |  |
| Depth                 |  | Medium To Slightly Thick (Faceted) |  |
| Table                 |  |                                    |  |
| Girdle                |  |                                    |  |
| Culet                 |  |                                    |  |
| Polish                |  |                                    |  |
| Symmetry              |  |                                    |  |
| Fluorescence          |  |                                    |  |
| Report #              |  |                                    |  |

**Comments:**  
This Laboratory Grown Diamond was created by Chemical Vapor Deposition (CVD) growth process.