



**ELECTRONIC COPY**

## LABORATORY GROWN DIAMOND REPORT

LG735599703  
Report verification at [igi.org](https://igi.org)

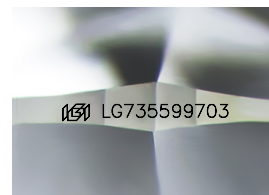
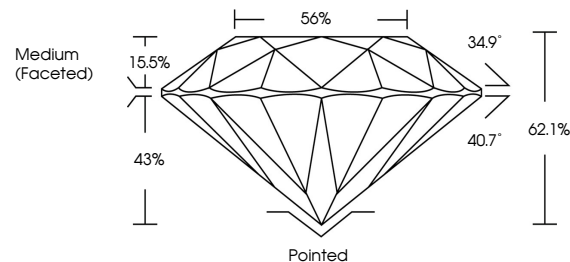
|                         |                          |
|-------------------------|--------------------------|
| September 24, 2025      |                          |
| IGI Report Number       | LG735599703              |
| Description             | LABORATORY GROWN DIAMOND |
| Shape and Cutting Style | ROUND BRILLIANT          |
| Measurements            | 10.94 - 10.98 X 6.81 MM  |
| GRADING RESULTS         |                          |
| Carat Weight            | 5.05 CARATS              |
| Color Grade             | E                        |
| Clarity Grade           | VVS 2                    |
| Cut Grade               | IDEAL                    |

### ADDITIONAL GRADING INFORMATION

|                |   |
|----------------|---|
| Polish         | EXCELLENT   |
| Symmetry       | EXCELLENT   |
| Fluorescence   | NONE  |
| Inscription(s) |  LG735599703 |

Comments: This Laboratory Grown Diamond was created by Chemical Vapor Deposition (CVD) growth process.  
Type IIa

## PROPORTIONS



Sample Image Used

## COLOR

D E F G H I J Faint Very Light Light

## CLARITY

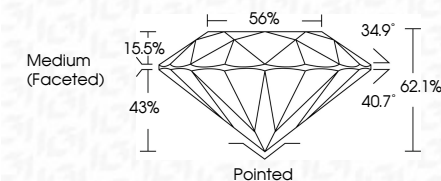
IF      VWS<sup>1-2</sup>      VS<sup>1-2</sup>      SI<sup>1-2</sup>      I<sup>1-3</sup>

|                        |                                |                           |                      |          |
|------------------------|--------------------------------|---------------------------|----------------------|----------|
| Internally<br>Flawless | Very Very<br>Slightly Included | Very<br>Slightly Included | Slightly<br>Included | Included |
|------------------------|--------------------------------|---------------------------|----------------------|----------|

## LABORATORY GROWN DIAMOND REPORT



|                         |                          |
|-------------------------|--------------------------|
| September 24, 2025      |                          |
| IGI Report Number       | LG735599703              |
| Description             | LABORATORY GROWN DIAMOND |
| Shape and Cutting Style | ROUND BRILLIANT          |
| Measurements            | 10.94 - 10.98 X 6.81 MM  |
| GRADING RESULTS         |                          |
| Carat Weight            | 5.05 CARATS              |
| Color Grade             | E                        |
| Clarity Grade           | VVS 2                    |
| Cut Grade               | IDEAL                    |



### ADDITIONAL GRADING INFORMATION

|   |                           |
|---|---------------------------|
| Polish  | EXCELLENT                 |
| Symmetry  | EXCELLENT                 |
| Fluorescence  | NONE                      |
| Inscription(s)  | <del>LG</del> LG735599703 |
| <p>Comments: This Laboratory Grown Diamond was created by Chemical Vapor Deposition (CVD) growth process.</p> <p>Type IIa</p> |                           |



© IGI 2020, International Gemological Institute

FD - 10 20



THIS DOCUMENT WAS PRODUCED WITH THE FOLLOWING SECURITY MEASURES: SPECIAL DOCUMENT PAPER, INK SCREENS, WATERMARK BACKGROUND DESIGNS, HOLOGRAM, AND OTHER SECURITY FEATURES NOT LISTED AND DO EXCEED DOCUMENT SECURITY INDUSTRY GUIDELINES

**www.igi.org**

September 24, 2025  
IGI Report No LG735599703  
ROUND BRILLIANT

|                          |                         |                  |              |
|--------------------------|-------------------------|------------------|--------------|
| IGI Report No LG73599703 | 10.94 - 10.98 X 4.81 MM | 5.05 CARATS      |              |
| ROUND BRILLIANT          | Carat Weight            |                  |              |
|                          | Color Grade             | VVS 2            | Pointed      |
|                          | Clarity Grade           | IDEAL            | EXCELLENT    |
|                          | Cut Grade               | 62.1%            | EXCELLENT    |
|                          | Depth                   |                  | NONE         |
|                          | Table                   | 55%              | Colorless    |
|                          | Girdle                  | Medium (Faceted) |              |
|                          |                         |                  | Culet        |
|                          |                         |                  | Polish       |
|                          |                         |                  | Symmetry     |
|                          |                         |                  | Fluorescence |

**Comments:**  
This Laboratory Grown Diamond was created by Chemical Vapor Deposition (CVD) growth process.