



ELECTRONIC COPY

LABORATORY GROWN DIAMOND REPORT

LG737551393
Report verification at igi.org

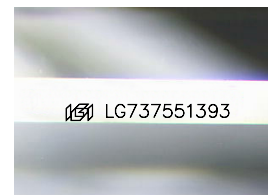
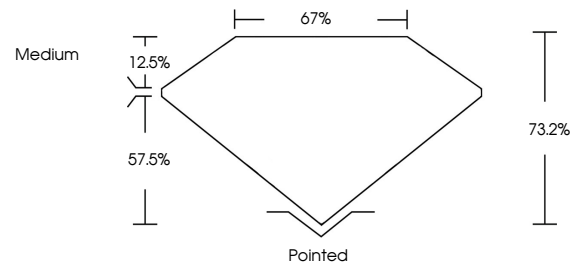
September 30, 2025	
IGI Report Number	LG737551393
Description	LABORATORY GROWN DIAMOND
Shape and Cutting Style	PRINCESS CUT
Measurements	8.53 X 8.28 X 6.06 MM
GRADING RESULTS	
Carat Weight	3.58 CARATS
Color Grade	F
Clarity Grade	VVS 2

ADDITIONAL GRADING INFORMATION

Polish	EXCELLENT
Symmetry	EXCELLENT
Fluorescence	NONE
Inscription(s)	151 LG737551393

Comments: This Laboratory Grown Diamond was created by Chemical Vapor Deposition (CVD) growth process.
Type IIa

PROPORTIONS



Sample Image Used

COLOR

D E F G H I J Faint Very Light Light

CLARITY

IF	VVS ¹⁻²	VS ¹⁻²	SI ¹⁻²	I ¹⁻³
Internally Flawless	Very Very Slightly Included	Very Slightly Included	Slightly Included	Included

LABORATORY GROWN DIAMOND REPORT



September 30, 2025	
IGI Report Number	LG737551393
Description	LABORATORY GROWN DIAMOND
Shape and Cutting Style	PRINCESS CUT
Measurements	8.53 X 8.28 X 6.06 MM
GRADING RESULTS	
Carat Weight	3.58 CARATS
Color Grade	F
Clarity Grade	VVS 2

ADDITIONAL GRADING INFORMATION

Polish	EXCELLENT
Symmetry	EXCELLENT
Fluorescence	NONE
Inscription(s)	 LG737551393
<p>Comments: This Laboratory Grown Diamond was created by Chemical Vapor Deposition (CVD) growth process.</p> <p>Type IIa</p>	



www.igi.org

© IGI 2020, International Gemological Institute

FD - 10 20



THIS DOCUMENT WAS PRODUCED WITH THE FOLLOWING SECURITY MEASURES: SPECIAL DOCUMENT PAPER, INK SCREENS, WATERMARK, BACKGROUND DESIGNS, HOLOGRAM AND OTHER SECURITY FEATURES NOT LISTED AND DO EXCEED DOCUMENT SECURITY INDUSTRY GUIDELINE

September 30, 2025
IGI Report No LG737551393
PRINCESS CIT

IGI Report No L

PRINCESS CUI

8.53 X 8.28 X 6.06 MM
Carat Weight 3.58 CARATS

Color Grade	F
-------------	---

Clarity Grade	WS2
FL	
IF	
VVS	
VS	
SI	
I	
LP	
LP2	
LP3	
LP4	
LP5	
LP6	
LP7	
LP8	
LP9	
LP10	
LP11	
LP12	
LP13	
LP14	
LP15	
LP16	
LP17	
LP18	
LP19	
LP20	
LP21	
LP22	
LP23	
LP24	
LP25	
LP26	
LP27	
LP28	
LP29	
LP30	
LP31	
LP32	
LP33	
LP34	
LP35	
LP36	
LP37	
LP38	
LP39	
LP40	
LP41	
LP42	
LP43	
LP44	
LP45	
LP46	
LP47	
LP48	
LP49	
LP50	
LP51	
LP52	
LP53	
LP54	
LP55	
LP56	
LP57	
LP58	
LP59	
LP60	
LP61	
LP62	
LP63	
LP64	
LP65	
LP66	
LP67	
LP68	
LP69	
LP70	
LP71	
LP72	
LP73	
LP74	
LP75	
LP76	
LP77	
LP78	
LP79	
LP80	
LP81	
LP82	
LP83	
LP84	
LP85	
LP86	
LP87	
LP88	
LP89	
LP90	
LP91	
LP92	
LP93	
LP94	
LP95	
LP96	
LP97	
LP98	
LP99	
LP100	

Depth	73.2%
Table	67%

Medium	67%
Girdle	
labile	

110000

Culet	Pointed	Pointed

Polish	EXCELLENT
Symmetry	EXCELLENT

Fluorescence

Inscription(s)	1991 LG737551393

Comments:
This Laboratory Grown Diamond was

created by Chemical Vapor Deposition (CVD) growth process.

Type IIa