



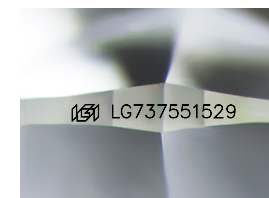
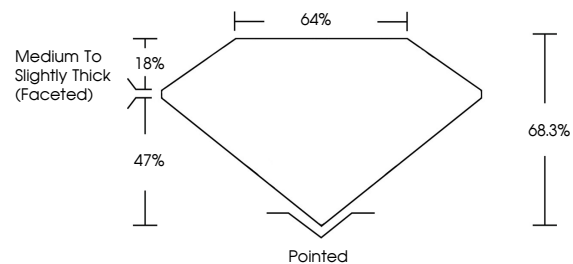
**ELECTRONIC COPY**

LG737551529  
Report verification at igi.org



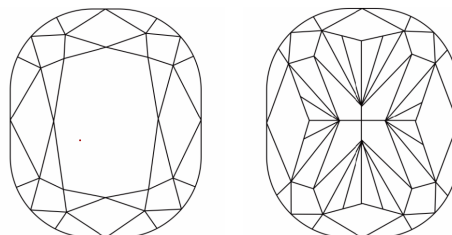
September 24, 2025  
IGI Report Number **LG737551529**  
Description **LABORATORY GROWN DIAMOND**  
Shape and Cutting Style **CUSHION MODIFIED BRILLIANT**  
Measurements **10.01 X 7.64 X 5.22 MM**  
**GRADING RESULTS**  
Carat Weight **3.56 CARATS**  
Color Grade **D**  
Clarity Grade **VVS 1**

**PROPORTIONS**



Sample Image Used

**CLARITY CHARACTERISTICS**



**KEY TO SYMBOLS**

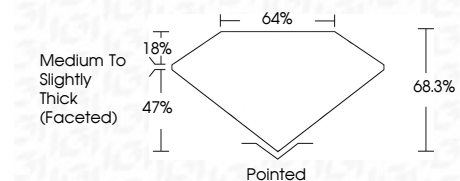
Red symbols indicate internal characteristics.  
Green symbols indicate external characteristics.

**COLOR**

D E F G H I J Faint Very Light Light

**CLARITY**

FL	IF	VVS <sup>1-2</sup>	VS <sup>1-2</sup>	SI <sup>1-2</sup>	I <sup>1-3</sup>
Flawless	Internally Flawless	Very Very Slightly Included	Very Slightly Included	Slightly Included	Included



**ADDITIONAL GRADING INFORMATION**

Polish **EXCELLENT**  
Symmetry **EXCELLENT**  
Fluorescence **NONE**  
Inscription(s) **IGI LG737551529**  
Comments: This Laboratory Grown Diamond was created by Chemical Vapor Deposition (CVD) growth process. Type IIa



**IGI**



September 24, 2025  
IGI Report No LG737551529  
CUSHION MODIFIED BRILLIANT  
10.01 X 7.64 X 5.22 MM  
3.56 CARATS  
D  
VVS 1  
68.3%  
47%  
64%  
Medium to Slightly Thick (Faceted)  
Pointed  
EXCELLENT  
EXCELLENT  
NONE  
IGI LG737551529  
Comments: This Laboratory Grown Diamond was created by Chemical Vapor Deposition (CVD) growth process. Type IIa