



**ELECTRONIC COPY**

LG739531886  
Report verification at [igi.org](http://igi.org)



October 11, 2025  
IGI Report Number **LG739531886**  
Description **LABORATORY GROWN DIAMOND**  
Shape and Cutting Style **CUSHION MODIFIED BRILLIANT**  
Measurements **9.67 X 8.91 X 5.73 MM**  
**GRADING RESULTS**  
Carat Weight **4.54 CARATS**  
Color Grade **FANCY VIVID BLUE**  
Clarity Grade **VVS 2**

**LABORATORY GROWN DIAMOND REPORT**

October 11, 2025  
IGI Report Number **LG739531886**  
Description **LABORATORY GROWN DIAMOND**  
Shape and Cutting Style **CUSHION MODIFIED BRILLIANT**  
Measurements **9.67 X 8.91 X 5.73 MM**

**GRADING RESULTS**

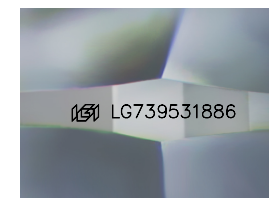
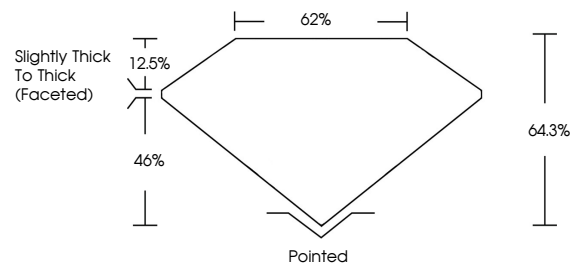
Carat Weight **4.54 CARATS**  
Color Grade **FANCY VIVID BLUE**  
Clarity Grade **VVS 2**

**ADDITIONAL GRADING INFORMATION**

Polish **EXCELLENT**  
Symmetry **EXCELLENT**  
Fluorescence **NONE**  
Inscription(s) **LG739531886**

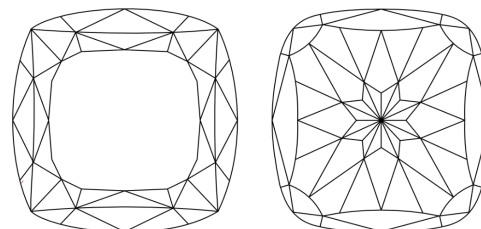
Comments: This Laboratory Grown Diamond was created by Chemical Vapor Deposition (CVD) growth process.  
Indications of post-growth treatment.

**PROPORTIONS**



Sample Image Used

**CLARITY CHARACTERISTICS**



**KEY TO SYMBOLS**

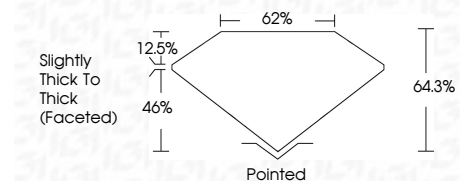
Red symbols indicate internal characteristics.  
Green symbols indicate external characteristics.

**COLOR**

D E F G H I J Faint Very Light Light

**CLARITY**

FL	IF	VVS <sup>1-2</sup>	VS <sup>1-2</sup>	SI <sup>1-2</sup>	I <sup>1-3</sup>
Flawless	Internally Flawless	Very Very Slightly Included	Very Slightly Included	Slightly Included	Included



**ADDITIONAL GRADING INFORMATION**

Polish **EXCELLENT**  
Symmetry **EXCELLENT**  
Fluorescence **NONE**  
Inscription(s) **LG739531886**  
Comments: This Laboratory Grown Diamond was created by Chemical Vapor Deposition (CVD) growth process.  
Indications of post-growth treatment.



October 11, 2025  
IGI Report No **LG739531886**  
**CUSHION MODIFIED BRILLIANT**  
**9.67 X 8.91 X 5.73 MM**  
Carat Weight **4.54 CARATS**  
Color Grade **FANCY VIVID BLUE**  
Clarity Grade **VVS 2**  
Depth **64.3%**  
Table **62%**  
Girdle **Slightly Thick To Thick (Faceted)**  
Culet **Pointed**  
Polish **EXCELLENT**  
Symmetry **EXCELLENT**  
Fluorescence **NONE**  
Inscription(s) **LG739531886**

Comments: This Laboratory Grown Diamond was created by Chemical Vapor Deposition (CVD) growth process.  
Indications of post-growth treatment.