



ELECTRONIC COPY

LG739552257
Report verification at igi.org



October 4, 2025

IGI Report Number **LG739552257**

Description **LABORATORY GROWN DIAMOND**

Shape and Cutting Style **EMERALD CUT**

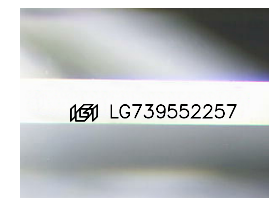
Measurements **13.22 X 7.42 X 5.29 MM**

GRADING RESULTS

Carat Weight **5.53 CARATS**

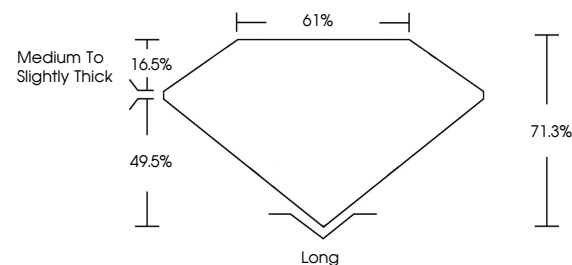
Color Grade **D**

Clarity Grade **VVS 1**

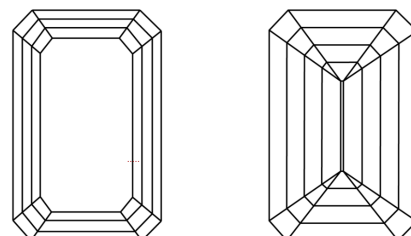


Sample Image Used

PROPORTIONS



CLARITY CHARACTERISTICS



KEY TO SYMBOLS

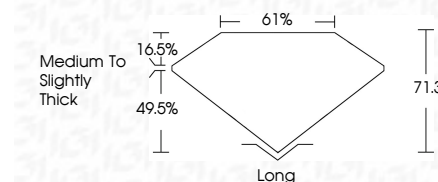
Red symbols indicate internal characteristics.
Green symbols indicate external characteristics.

COLOR

D E F G H I J Faint Very Light Light

CLARITY

FL	IF	VVS ¹⁻²	VS ¹⁻²	SI ¹⁻²	I ¹⁻³
Flawless	Internally Flawless	Very Very Slightly Included	Very Slightly Included	Slightly Included	Included



ADDITIONAL GRADING INFORMATION

Polish **EXCELLENT**

Symmetry **EXCELLENT**

Fluorescence **NONE**

Inscription(s) **IGI LG739552257**

Comments: This Laboratory Grown Diamond was created by Chemical Vapor Deposition (CVD) growth process. Type IIa



IGI



October 4, 2025
IGI Report No LG739552257
EMERALD CUT
13.22 X 7.42 X 5.29 MM
5.53 CARATS
D
VVS 1
71.3%
61%
Medium to Slightly Thick
Long
EXCELLENT
EXCELLENT
NONE
IGI LG739552257
Comments: This Laboratory Grown Diamond was created by Chemical Vapor Deposition (CVD) growth process. Type IIa