



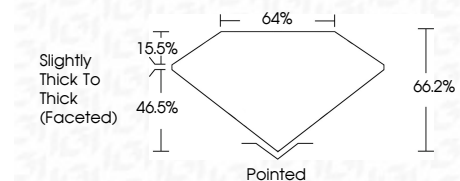
ELECTRONIC COPY

LG741576707 Report verification at igi.org



October 31, 2025 IGI Report Number LG741576707 Description LABORATORY GROWN DIAMOND Shape and Cutting Style SQUARE CUSHION MODIFIED BRILLIANT Measurements 8.00 X 7.70 X 5.10 MM

GRADING RESULTS Carat Weight 2.85 CARATS Color Grade D Clarity Grade VVS 1



ADDITIONAL GRADING INFORMATION Polish EXCELLENT Symmetry EXCELLENT Fluorescence NONE Inscription(s) LG741576707 Comments: This Laboratory Grown Diamond was created by Chemical Vapor Deposition (CVD) growth process. Type IIa



October 31, 2025 IGI Report No LG741576707 SQUARE CUSHION MODIFIED BRILLIANT 8.00 X 7.70 X 5.10 MM 2.85 CARATS D VVS 1 66.2% 64% Slightly Thick To Thick (Faceted) Pointed EXCELLENT EXCELLENT NONE LG741576707

Comments: This Laboratory Grown Diamond was created by Chemical Vapor Deposition (CVD) growth process. Type IIa

LABORATORY GROWN DIAMOND REPORT

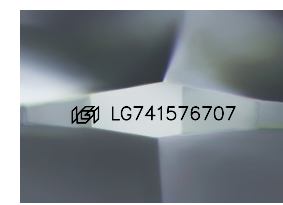
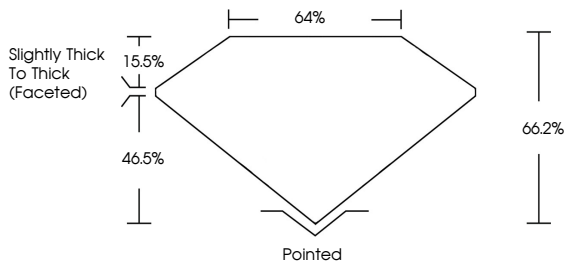
October 31, 2025 IGI Report Number LG741576707 Description LABORATORY GROWN DIAMOND Shape and Cutting Style SQUARE CUSHION MODIFIED BRILLIANT Measurements 8.00 X 7.70 X 5.10 MM

GRADING RESULTS Carat Weight 2.85 CARATS Color Grade D Clarity Grade VVS 1

ADDITIONAL GRADING INFORMATION Polish EXCELLENT Symmetry EXCELLENT Fluorescence NONE Inscription(s) LG741576707

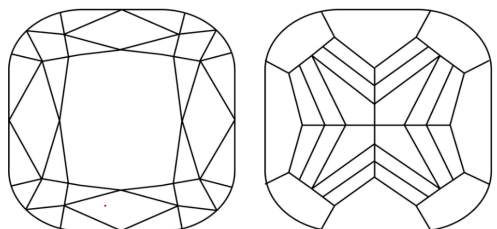
Comments: This Laboratory Grown Diamond was created by Chemical Vapor Deposition (CVD) growth process. Type IIa

PROPORTIONS



Sample Image Used

CLARITY CHARACTERISTICS



KEY TO SYMBOLS Red symbols indicate internal characteristics. Green symbols indicate external characteristics.

Table with columns D, E, F, G, H, I, J, Faint, Very Light, Light

Table with columns FL, IF, VS 1-2, VS 1-2, SI 1-2, I 1-3 and corresponding descriptions: Flawless, Internally Flawless, Very Very Slightly Included, Very Slightly Included, Slightly Included, Included

