



ELECTRONIC COPY

LG743515819
Report verification at igi.org



October 20, 2025

IGI Report Number **LG743515819**

Description **LABORATORY GROWN DIAMOND**

Shape and Cutting Style **PRINCESS CUT**

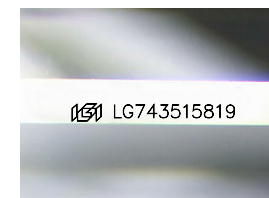
Measurements **11.23 X 10.97 X 7.25 MM**

GRADING RESULTS

Carat Weight **8.11 CARATS**

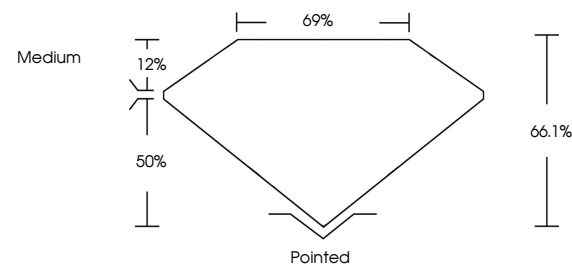
Color Grade **D**

Clarity Grade **VVS 1**

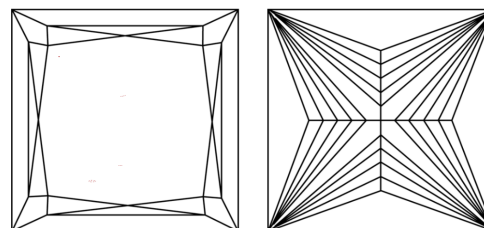


Sample Image Used

PROPORTIONS



CLARITY CHARACTERISTICS



KEY TO SYMBOLS

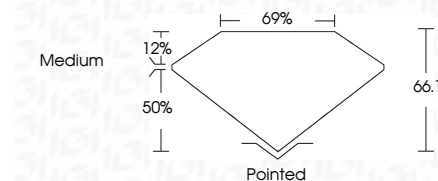
Red symbols indicate internal characteristics.
Green symbols indicate external characteristics.

COLOR

D E F G H I J Faint Very Light Light

CLARITY

FL	IF	VVS ¹⁻²	VS ¹⁻²	SI ¹⁻²	I ¹⁻³
Flawless	Internally Flawless	Very Very Slightly Included	Very Slightly Included	Slightly Included	Included



ADDITIONAL GRADING INFORMATION

Polish **EXCELLENT**

Symmetry **EXCELLENT**

Fluorescence **NONE**

Inscription(s) **IGI LG743515819**

Comments: As Grown - No indication of post-growth treatment.

This Laboratory Grown Diamond was created by Chemical Vapor Deposition (CVD) growth process. Type IIa



IGI

On behalf of



© IGI 2020, International Gemological Institute

FD - 10 20

October 20, 2025
IGI Report No LG743515819
PRINCESS CUT
11.23 X 10.97 X 7.25 MM
8.11 CARATS
D
VVS 1
66.1%
69%
Medium
Pointed
EXCELLENT
EXCELLENT
NONE
IGI LG743515819
Comments: As Grown - No indication of post-growth treatment.
This Laboratory Grown Diamond was created by Chemical Vapor Deposition (CVD) growth process. Type IIa