



**ELECTRONIC COPY**

## LABORATORY GROWN DIAMOND REPORT

LG746527072  
Report verification at [igi.org](https://igi.org)

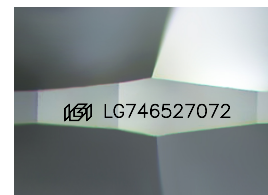
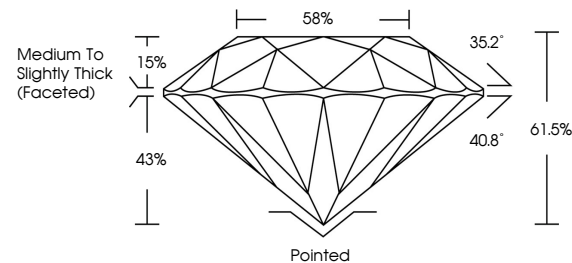
November 18, 2025	
IGI Report Number	LG746527072
Description	LABORATORY GROWN DIAMOND
Shape and Cutting Style	ROUND BRILLIANT
Measurements	8.34 - 8.40 X 5.15 MM
GRADING RESULTS	
Carat Weight	2.23 CARATS
Color Grade	E
Clarity Grade	VVS 1
Cut Grade	IDEAL

### ADDITIONAL GRADING INFORMATION

Polish	EXCELLENT
Symmetry	EXCELLENT
Fluorescence	NONE
Inscription(s)	 LG746527072

Comments: As Grown - No indication of post-growth treatment.  
This Laboratory Grown Diamond was created by High Pressure High Temperature (HPHT) growth process.  
Type II

## PROPORTIONS



Sample Image Used

## COLOR

D E F G H I J Faint Very Light Light

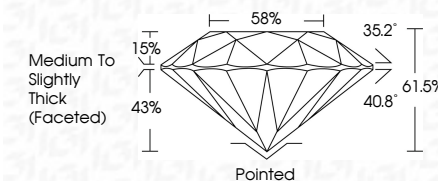
## CLARITY

FL	IF	VVS <sup>1-2</sup>	VS <sup>1-2</sup>	SI <sup>1-2</sup>	I <sup>1-3</sup>
Flawless	Internally Flawless	Very Very Slightly Included	Very Slightly Included	Slightly Included	Included

## LABORATORY GROWN DIAMOND REPORT



November 18, 2025	
IGI Report Number	LG746527072
Description	LABORATORY GROWN DIAMOND
Shape and Cutting Style	ROUND BRILLIANT
Measurements	8.34 - 8.40 X 5.15 MM
GRADING RESULTS	
Carat Weight	2.23 CARATS
Color Grade	E
Clarity Grade	VVS 1
Cut Grade	IDEAL



### ADDITIONAL GRADING INFORMATION

Polish	EXCELLENT
Symmetry	EXCELLENT
Fluorescence	NONE
Inscription(s)	<del>(G)</del> LG746527072
Comments: As Grown - No indication of post-growth treatment.	
This Laboratory Grown Diamond was created by High Pressure High Temperature (HPHT) growth process.	
Type II	



© IGI 2020, International Gemological Institute

FD - 10 20



THIS DOCUMENT WAS PRODUCED WITH THE FOLLOWING SECURITY MEASURES: SPECIAL DOCUMENT PAPER, INK SCREENS, WATERMARK, BACKGROUND DESIGNS, HOLOGRAM, AND OTHER SECURITY FEATURES NOT LISTED AND DO EXCEED DOCUMENT SECURITY INDUSTRY GUIDELINES.

**www.igi.org**

November 18, 2025  
IGI Report No LG746527072

IGL Report No. 1674652702	6.34 - 8.40 x 6.15 MM	2.23 CARATS	
ROUND Brilliant	Carat Weight	VVS 1	
	Color Grade	IDEAL	
	Clarity Grade	61.5%	65%
	Cut Grade	Medium to Slightly Thick (Faceted)	
	Depth		
	Table		
	Girdle		
	Culet	Pointed	
	Polish	EXCELLENT	
	Symmetry	EXCELLENT	
	Fluorescence	NONE	
	Comments	see 1674652702	

**Comments:**  
As Grown - No indication of post-growth treatment  
This Laboratory Grown Diamond was created by High Pressure High Temperature (HPHT) growth process.