

**ELECTRONIC COPY**

## LABORATORY GROWN DIAMOND REPORT

|                         |                          |
|-------------------------|--------------------------|
| November 18, 2025       |                          |
| IGI Report Number       | LG746538675              |
| Description             | LABORATORY GROWN DIAMOND |
| Shape and Cutting Style | ROUND BRILLIANT          |
| Measurements            | 8.61 - 8.67 X 5.29 MM    |
| GRADING RESULTS         |                          |
| Carat Weight            | 2.41 CARATS              |
| Color Grade             | D                        |
| Clarity Grade           | VVS 2                    |
| Cut Grade               | IDEAL                    |

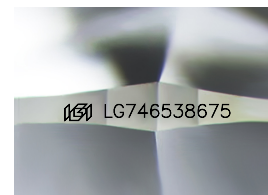
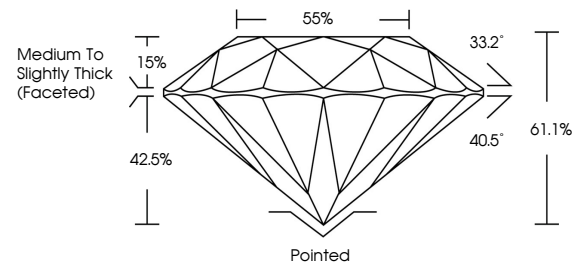
### ADDITIONAL GRADING INFORMATION

|                |                |
|----------------|----------------|
| Polish         | EXCELLENT      |
| Symmetry       | EXCELLENT      |
| Fluorescence   | NONE           |
| Inscription(s) | 15 LG746538675 |

Comments: As Grown - No indication of post-growth treatment.  
This Laboratory Grown Diamond was created by High Pressure High Temperature (HPHT) growth process.  
Type II

LG746538675  
Report verification at [igi.org](https://igi.org)

## PROPORTIONS



Sample Image Used

## COLOR

D E F G H I J Faint Very Light Light

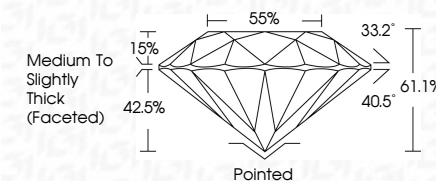
## CLARITY

| FL       | IF                  | VVS <sup>1-2</sup>          | VS <sup>1-2</sup>      | SI <sup>1-2</sup> | I <sup>1-3</sup> |
|----------|---------------------|-----------------------------|------------------------|-------------------|------------------|
| Flawless | Internally Flawless | Very Very Slightly Included | Very Slightly Included | Slightly Included | Included         |

## LABORATORY GROWN DIAMOND REPORT



|                         |                          |
|-------------------------|--------------------------|
| November 18, 2025       |                          |
| IGI Report Number       | LG746538675              |
| Description             | LABORATORY GROWN DIAMOND |
| Shape and Cutting Style | ROUND BRILLIANT          |
| Measurements            | 8.61 - 8.67 X 5.29 MM    |
| GRADING RESULTS         |                          |
| Carat Weight            | 2.41 CARATS              |
| Color Grade             | D                        |
| Clarity Grade           | VVS 2                    |
| Cut Grade               | IDEAL                    |



### ADDITIONAL GRADING INFORMATION

|  |                            |
|--|----------------------------|
| Polish   | EXCELLENT                  |
| Symmetry   | EXCELLENT                  |
| Fluorescence   | NONE                       |
| Inscription(s)   | <del>(G)</del> LG746538675 |
| <p>Comments: As Grown - No indication of post-growth treatment.</p> <p>This Laboratory Grown Diamond was created by High Pressure High Temperature (HPHT) growth process.</p> <p>Type II</p> |                            |



© IGI 2020, International Gemological Institute

FD - 10 20

**www.igi.org**

THIS DOCUMENT WAS PRODUCED WITH THE FOLLOWING SECURITY MEASURES: SPECIAL DOCUMENT PAPER, INK SCREENS, WATERMARK, BACKGROUND DESIGNS, HOLOGRAM AND OTHER SECURITY FEATURES NOT LISTED AND DO EXCEED DOCUMENT SECURITY INDUSTRY GUIDELINE

November 18, 2025  
GI Report No LG746538675  
ROUND BRILLIANT

|                       |                                    |
|-----------------------|------------------------------------|
| 3.61 - 8.67 X 5.29 MM | 241 CARATS                         |
| Carat Weight          | VVS 2                              |
| Color Grade           | IDEAL                              |
| Clarity Grade         | 61.1%                              |
| Cut Grade             | 58%                                |
| Depth                 | Medium to Slightly Thick (Faceted) |
| Table                 | Pointed                            |
| Grade                 | EXCELLENT                          |
|                       | EXCELLENT                          |
|                       | NONE                               |
|                       | Fluorescence                       |

**Comments:**  
As Grown - No indication of post-growth treatment.  
This Laboratory Grown Diamond was created by High Pressure High Temperature (HPHT) growth process.