



ELECTRONIC COPY

LABORATORY GROWN DIAMOND REPORT

LG746539056
Report verification at igi.org

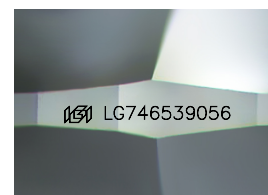
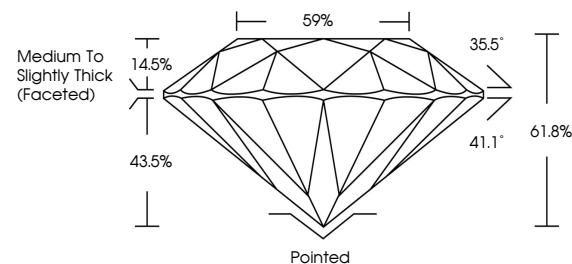
November 18, 2025	
IGI Report Number	LG746539056
Description	LABORATORY GROWN DIAMOND
Shape and Cutting Style	ROUND BRILLIANT
Measurements	8.11 - 8.17 X 5.04 MM
GRADING RESULTS	
Carat Weight	2.07 CARATS
Color Grade	D
Clarity Grade	VVS 2
Cut Grade	IDEAL

ADDITIONAL GRADING INFORMATION

Polish	EXCELLENT
Symmetry	EXCELLENT
Fluorescence	NONE
Inscription(s)	15 LG746539056

Comments: As Grown - No indication of post-growth treatment.
This Laboratory Grown Diamond was created by High Pressure High Temperature (HPHT) growth process.
Type II

PROPORTIONS



Sample Image Used

COLOR

D E F G H I J Faint Very Light Light

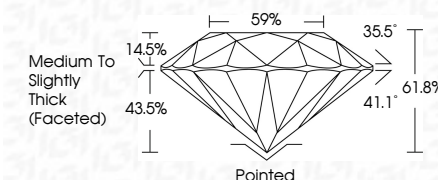
CLARITY

FL	IF	VVS ¹⁻²	VS ¹⁻²	SI ¹⁻²	I ¹⁻³
Flawless	Internally Flawless	Very Very Slightly Included	Very Slightly Included	Slightly Included	Included

LABORATORY GROWN DIAMOND REPORT



November 18, 2025	
IGI Report Number	LG746539056
Description	LABORATORY GROWN DIAMOND
Shape and Cutting Style	ROUND BRILLIANT
Measurements	8.11 - 8.17 X 5.04 MM
GRADING RESULTS	
Carat Weight	2.07 CARATS
Color Grade	D
Clarity Grade	VVS 2
Cut Grade	IDEAL



ADDITIONAL GRADING INFORMATION

Polish	EXCELLENT
Symmetry	EXCELLENT
Fluorescence	NONE
Inscription(s)	
Comments: As Grown - No indication of post-growth treatment.	
This Laboratory Grown Diamond was created by High Pressure High Temperature (HPHT) growth process.	
Type II	



© IGI 2020, International Gemological Institute

FD - 10 20



THIS DOCUMENT WAS PRODUCED WITH THE FOLLOWING SECURITY MEASURES: SPECIAL DOCUMENT PAPER, INK SCREENS, WATERMARK, BACKGROUND DESIGNS, HOLOGRAM AND OTHER SECURITY FEATURES NOT LISTED AND DO EXCEED DOCUMENT SECURITY INDUSTRY GUIDELINES

www.igi.org

November 18, 2025
 IGI Report No LG746539056
 ROUND BRILLIANT

ROUND BRILLIANT
8.11 - 8.17 X 5.04 MM

3.11 - 8.17 X 5.04 MM
Carat Weight 2.07 CARATS

Color Grade	D
-------------	---

Clarity Grade	WS2
Very Good	100%
Good	100%
Fair	100%
Poor	100%
Very Poor	100%

Cut Grade	IDEAL
Depth	61.8%

Depth	61.8%
Table	59%

Girdle Medium To Slightly Thick (Faceted)

	Thick (Faceted)	Pointed
Culet		

Culet	Pointed
Polish	EXCELLENT

Symmetry	EXCELLENT
Glaze	NONE

Fluorescence	NONE
Inscription(s)	151 LG746539056

Comments:

Comments:
As Grown - No Indication of post-growth

This Laboratory Grown Diamond was created by L'Oréal Research and Development.

created by High Pressure High Temperature (HPHT) growth process.

Type II