



ELECTRONIC COPY

LABORATORY GROWN DIAMOND REPORT

November 19, 2025	
IGI Report Number	LG746539222
Description	LABORATORY GROWN DIAMOND
Shape and Cutting Style	ROUND BRILLIANT
Measurements	9.34 - 9.37 X 5.67 MM
GRADING RESULTS	
Carat Weight	3.06 CARATS
Color Grade	F
Clarity Grade	VVS 2
Cut Grade	IDEAL

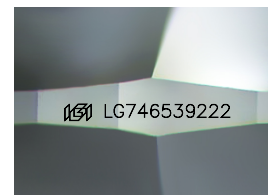
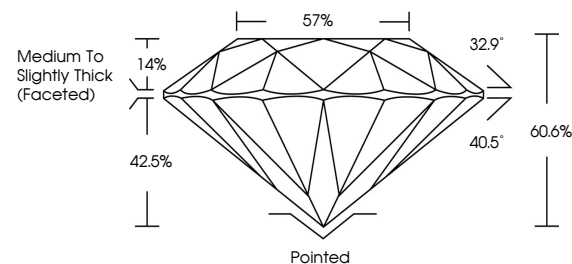
ADDITIONAL GRADING INFORMATION

Polish	EXCELLENT
Symmetry	EXCELLENT
Fluorescence	NONE
Inscription(s)	15 LG746539222

Comments: This Laboratory Grown Diamond was created by Chemical Vapor Deposition (CVD) growth process.
Type IIa

LG746539222
Report verification at iqi.org

PROPORTIONS



Sample Image Used

COLOR

D E F G H I J Faint Very Light Light

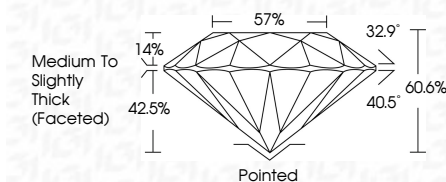
CLARITY

FL	IF	VVS ¹⁻²	VS ¹⁻²	SI ¹⁻²	I ¹⁻³
Flawless	Internally Flawless	Very Very Slightly Included	Very Slightly Included	Slightly Included	Included

LABORATORY GROWN DIAMOND REPORT



November 19, 2025	
IGI Report Number	LG746539222
Description	LABORATORY GROWN DIAMOND
Shape and Cutting Style	ROUND BRILLIANT
Measurements	9.34 - 9.37 X 5.67 MM
GRADING RESULTS	
Carat Weight	3.06 CARATS
Color Grade	F
Clarity Grade	VVS 2
Cut Grade	IDEAL



ADDITIONAL GRADING INFORMATION

Polish	EXCELLENT
Symmetry	EXCELLENT
Fluorescence	NONE
Inscription(s)	 LG746539222
<p>Comments: This Laboratory Grown Diamond was created by Chemical Vapor Deposition (CVD) growth process.</p> <p>Type IIa</p>	



© IGI 2020, International Gemological Institute

FD - 10 20



THIS DOCUMENT WAS PRODUCED WITH THE FOLLOWING SECURITY MEASURES: SPECIAL DOCUMENT PAPER, INK SCREENS, WATERMARK, BACKGROUND DESIGNS, HOLOGRAM AND OTHER SECURITY FEATURES NOT LISTED AND DO EXCEED DOCUMENT SECURITY INDUSTRY GUIDELINES

www.igi.org

November 19, 2025
GI Report No LG746539222

IGI Report No LG74
DOING BRILLIANT

ROUND BRIDGES

7.34 - 9.3/ X 5.6/ MM
Carat Weight
3.06 CARATS

Color Grade F

Clarity Grade	WS 2
FL	0.00
IF	0.01
I1	0.03
I2	0.05
S1	0.08
S2	0.12
S3	0.18
S4	0.25
S5	0.35
S6	0.50
S7	0.70
S8	1.00
S9	1.50
S10	2.00
S11	3.00
S12	4.00
S13	5.00
S14	6.00
S15	7.00
S16	8.00
S17	9.00
S18	10.00
S19	11.00
S20	12.00
S21	13.00
S22	14.00
S23	15.00
S24	16.00
S25	17.00
S26	18.00
S27	19.00
S28	20.00
S29	21.00
S30	22.00
S31	23.00
S32	24.00
S33	25.00
S34	26.00
S35	27.00
S36	28.00
S37	29.00
S38	30.00
S39	31.00
S40	32.00
S41	33.00
S42	34.00
S43	35.00
S44	36.00
S45	37.00
S46	38.00
S47	39.00
S48	40.00
S49	41.00
S50	42.00
S51	43.00
S52	44.00
S53	45.00
S54	46.00
S55	47.00
S56	48.00
S57	49.00
S58	50.00
S59	51.00
S60	52.00
S61	53.00
S62	54.00
S63	55.00
S64	56.00
S65	57.00
S66	58.00
S67	59.00
S68	60.00
S69	61.00
S70	62.00
S71	63.00
S72	64.00
S73	65.00
S74	66.00
S75	67.00
S76	68.00
S77	69.00
S78	70.00
S79	71.00
S80	72.00
S81	73.00
S82	74.00
S83	75.00
S84	76.00
S85	77.00
S86	78.00
S87	79.00
S88	80.00
S89	81.00
S90	82.00
S91	83.00
S92	84.00
S93	85.00
S94	86.00
S95	87.00
S96	88.00
S97	89.00
S98	90.00
S99	91.00
S100	92.00
S101	93.00
S102	94.00
S103	95.00
S104	96.00
S105	97.00
S106	98.00
S107	99.00
S108	100.00
S109	101.00
S110	102.00
S111	103.00
S112	104.00
S113	105.00
S114	106.00
S115	107.00
S116	108.00
S117	109.00
S118	110.00
S119	111.00
S120	112.00
S121	113.00
S122	114.00
S123	115.00
S124	116.00
S125	117.00
S126	118.00
S127	119.00
S128	120.00
S129	121.00
S130	122.00
S131	123.00
S132	124.00
S133	125.00
S134	126.00
S135	127.00
S136	128.00
S137	129.00
S138	130.00
S139	131.00
S140	132.00
S141	133.00
S142	134.00
S143	135.00
S144	136.00
S145	137.00
S146	138.00
S147	139.00
S148	140.00
S149	141.00
S150	142.0

Depth	Cut Grade	IDEAL	40.50%
-------	-----------	-------	--------

Dep't	60.0%	57%
Table		

Girdle

IIIICK (revised)

Country	Polished	Pointed
Cuba	EXCELLENT	Pointed
Polish	EXCELLENT	Pointed

Symmetry

Fluorescence	None
Inscription(s)	1681 G746539272

1-800-451-4641

Comments:
This Laboratory Grown Diamond was

created by Chemical Vapor Deposition (CVD) growth process.

Type IIa