



**ELECTRONIC COPY**

## LABORATORY GROWN DIAMOND REPORT

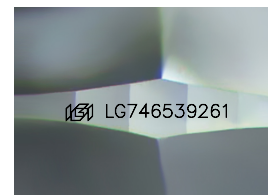
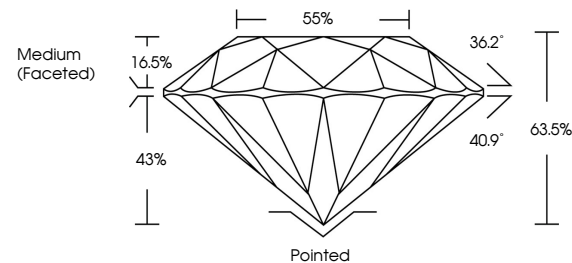
LG746539261  
Report verification at [igi.org](https://igi.org)

November 19, 2025	
IGI Report Number	LG746539261
Description	LABORATORY GROWN DIAMOND
Shape and Cutting Style	ROUND BRILLIANT
Measurements	9.13 - 9.19 X 5.81 MM
GRADING RESULTS	
Carat Weight	3.01 CARATS
Color Grade	D
Clarity Grade	VS 1
Cut Grade	EXCELLENT

### ADDITIONAL GRADING INFORMATION

Polish	EXCELLENT
Symmetry	EXCELLENT
Fluorescence	NONE
Inscription(s)	 LG746539261

Comments: HEARTS & ARROWS  
As Grown - No indication of post-growth treatment.  
This Laboratory Grown Diamond was created by High  
Pressure High Temperature (HPHT) growth process.  
Type II



Sample Image Used

## COLOR

D E F G H I J Faint Very Light Light

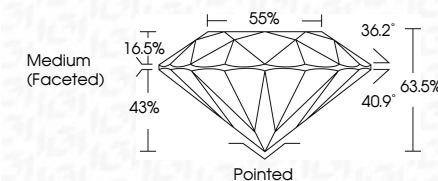
## CLARITY

FL	IF	VVS <sup>1-2</sup>	VS <sup>1-2</sup>	SI <sup>1-2</sup>	I <sup>1-3</sup>
Flawless	Internally Flawless	Very Very Slightly Included	Very Slightly Included	Slightly Included	Included

## LABORATORY GROWN DIAMOND REPORT

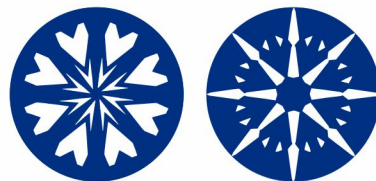


November 19, 2025	
IGI Report Number	LG746539261
Description	LABORATORY GROWN DIAMOND
Shape and Cutting Style	ROUND BRILLIANT
Measurements	9.13 - 9.19 X 5.81 MM
GRADING RESULTS	
Carat Weight	3.01 CARATS
Color Grade	D
Clarity Grade	VS 1
Cut Grade	EXCELLENT



### ADDITIONAL GRADING INFORMATION

Polish	EXCELLENT
Symmetry	EXCELLENT
Fluorescence	NONE
Inscription(s)	<del>(G)</del> LG746539261
Comments: HEARTS & ARROWS	
As Grown - No indication of post-growth treatment.	
This Laboratory Grown Diamond was created by High Pressure High Temperature (HPHT) growth process.	
Type II	



**www.igi.org**



© IGI 2020, International Gemological Institute

FD - 10 20



THIS DOCUMENT WAS PRODUCED WITH THE FOLLOWING SECURITY MEASURES: SPECIAL DOCUMENT PAPER, INK SCREENS, WATERMARK, BACKGROUND DESIGNS, HOLOGRAM AND OTHER SECURITY FEATURES NOT LISTED AND DO EXCEED DOCUMENT SECURITY INDUSTRY GUIDELINES



November 19, 2025  
IGI Report No LG746539261  
ROUND BRILLIANT

<b>9.13 - 9.19 X 5.61 MM</b>		<b>3.01 CARATS</b>	
Carat Weight		Color Grade	D
Clarity Grade		Cut Grade	VS 1
Depth		Table	EXCELLENT
Girdle			63.05%
			55%
			Medium (Faceted)
Culet			
Polish			Pointed
Symmetry			EXCELLENT
Fluorescence			EXCELLENT
			NONE
			4041 1274453003

**Comments:**  
HEARTS & ARROWS  
As Grown - No Indication of post-growth  
treatment.  
This Laboratory Grown Diamond was  
created by High Pressure High  
Temperature (HPHT) growth process.