



ELECTRONIC COPY

LABORATORY GROWN DIAMOND REPORT

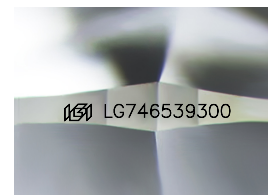
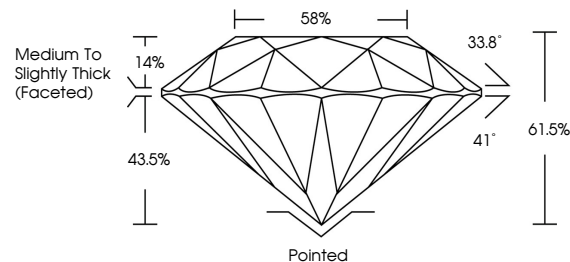
LG746539300
Report verification at igi.org

November 18, 2025	
IGI Report Number	LG746539300
Description	LABORATORY GROWN DIAMOND
Shape and Cutting Style	ROUND BRILLIANT
Measurements	9.27 - 9.33 X 5.72 MM
GRADING RESULTS	
Carat Weight	3.05 CARATS
Color Grade	F
Clarity Grade	VVS 2
Cut Grade	IDEAL

ADDITIONAL GRADING INFORMATION

Polish	EXCELLENT
Symmetry	EXCELLENT
Fluorescence	NONE
Inscription(s)	 LG746539300

Comments: HEARTS & ARROWS
This Laboratory Grown Diamond was created by
Chemical Vapor Deposition (CVD) growth process.
Type IIa



Sample Image Used

COLOR

D E F G H I J Faint Very Light Light

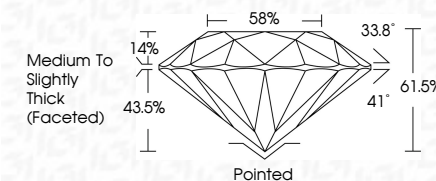
CLARITY

FL	IF	VVS ¹⁻²	VS ¹⁻²	SI ¹⁻²	I ¹⁻³
Flawless	Internally Flawless	Very Very Slightly Included	Very Slightly Included	Slightly Included	Included

LABORATORY GROWN DIAMOND REPORT

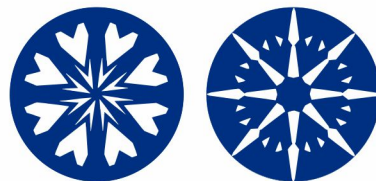


November 18, 2025	
IGI Report Number	LG746539300
Description	LABORATORY GROWN DIAMOND
Shape and Cutting Style	ROUND BRILLIANT
Measurements	9.27 - 9.33 X 5.72 MM
GRADING RESULTS	
Carat Weight	3.05 CARATS
Color Grade	F
Clarity Grade	VVS 2
Cut Grade	IDEAL



ADDITIONAL GRADING INFORMATION

Polish	EXCELLENT
Symmetry	EXCELLENT
Fluorescence	NONE
Inscription(s)	 LG746539300
<p>Comments: HEARTS & ARROWS This Laboratory Grown Diamond was created by Chemical Vapor Deposition (CVD) growth process. Type Ila</p>	



www.igi.org



© IGI 2020, International Gemological Institute

FD - 10 20



THIS DOCUMENT WAS PRODUCED WITH THE FOLLOWING SECURITY MEASURES: SPECIAL DOCUMENT PAPER, INK SCREENS, WATERMARK, BACKGROUND DESIGNS, HOLOGRAM AND OTHER SECURITY FEATURES NOT LISTED AND DO EXCEED DOCUMENT SECURITY INDUSTRY GUIDELINES



November 18, 2025
GI Report No LG746539300

IGI Report No LG74653
POLYIND BRILLIANT

9.27 - 9.33 X 5.72 MM

Carat Weight 3.05 CARATS

Color Grade

[illegible]

Out Grade

IDEAL

Table	58%
-------	-----

Medium to Slightly Thick (Faceted)

Culet	Pointed
	

Symmetry

Inscription(s) LG746539300

Comments:

Comments:

**This Laboratory Grown Diamond was
Created by Chemical Vapor Deposition**

Type IIa