



ELECTRONIC COPY

LABORATORY GROWN DIAMOND REPORT

LG746539424
Report verification at igi.org

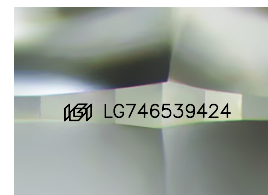
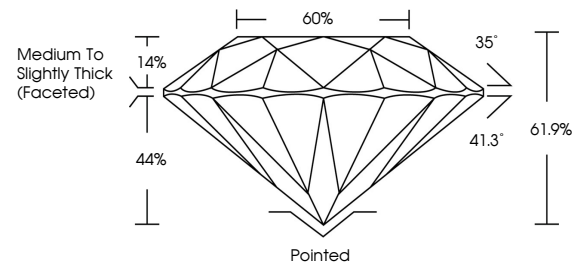
November 18, 2025	
IGI Report Number	LG746539424
Description	LABORATORY GROWN DIAMOND
Shape and Cutting Style	ROUND BRILLIANT
Measurements	8.65 - 8.71 X 5.37 MM
GRADING RESULTS	
Carat Weight	2.50 CARATS
Color Grade	E
Clarity Grade	VS 1
Cut Grade	IDEAL

ADDITIONAL GRADING INFORMATION

Polish	EXCELLENT
Symmetry	EXCELLENT
Fluorescence	NONE
Inscription(s)	151 LG746539424

Comments: This Laboratory Grown Diamond was created by Chemical Vapor Deposition (CVD) growth process.
Type IIa

PROPORTIONS



Sample Image Used

COLOR

D E F G H I J Faint Very Light Light

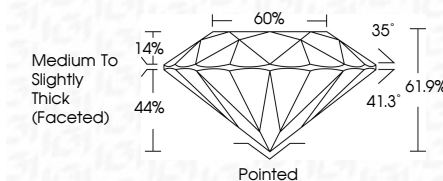
CLARITY

FL	IF	VVS ¹⁻²	VS ¹⁻²	SI ¹⁻²	I ¹⁻³
Flawless	Internally Flawless	Very Very Slightly Included	Very Slightly Included	Slightly Included	Included

LABORATORY GROWN DIAMOND REPORT



November 18, 2025	
IGI Report Number	LG746539424
Description	LABORATORY GROWN DIAMOND
Shape and Cutting Style	ROUND BRILLIANT
Measurements	8.65 - 8.71 X 5.37 MM
GRADING RESULTS	
Carat Weight	2.50 CARATS
Color Grade	E
Clarity Grade	VS 1
Cut Grade	IDEAL



ADDITIONAL GRADING INFORMATION

Polish	EXCELLENT
Symmetry	EXCELLENT
Fluorescence	NONE
Inscription(s)	 LG74653942A
<p>Comments: This Laboratory Grown Diamond was created by Chemical Vapor Deposition (CVD) growth process.</p> <p>Type IIa</p>	



© IGI 2020, International Gemological Institute

FD - 10 20

www.igi.org



THIS DOCUMENT WAS PRODUCED WITH THE FOLLOWING SECURITY MEASURES: SPECIAL DOCUMENT PAPER, INK SCREENS, WATERMARK, BACKGROUND DESIGNS, HOLOGRAM AND OTHER SECURITY FEATURES NOT LISTED AND DO EXCEED DOCUMENT SECURITY INDUSTRY GUIDELINE

November 18, 2025
GI Report No LG746539424

IGI Report No LG74
DOING BRILLIANT

IN THE CIRCUIT COURT OF THE FIRST JUDICIAL CIRCUIT IN AND FOR THE COUNTY OF DADE, FLORIDA

3.66 - 8.71 X 5.37 MM
2.50 CARATS
Carat Weight

Color Grade

Clarity Grade

	Cut Grade	IDEAL
Depth	67.0%	41.0%

Dep't	61.7%	60%
Table		

Girdle

IIIICK (revised)

Country	Polished	Pointed
Czech	EXCELLENT	Pointed
Polish	EXCELLENT	Pointed

Symmetry

Fluorescence	None
Inscription(s)	1681 G74659424

1-800-368-6868

Comments:
This Laboratory Grown Diamond was

created by Chemical Vapor Deposition (CVD) growth process.

Type IIa