



**ELECTRONIC COPY**

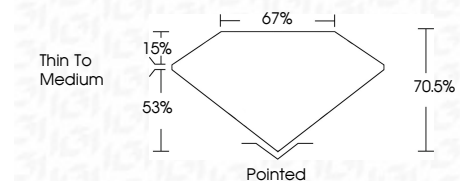
749558649  
Report verification at igi.org



January 2, 2026  
IGI Report Number **749558649**  
Description **NATURAL DIAMOND**  
Shape and Cutting Style **MODIFIED KITE STEP CUT**  
Measurements **11.99 X 4.51 X 3.18 MM**

**GRADING RESULTS**

Carat Weight **1.02 CARAT**  
Color Grade **J**  
Clarity Grade **VS 2**  
Cut Grade **VERY GOOD**



**ADDITIONAL GRADING INFORMATION**

Polish **EXCELLENT**  
Symmetry **EXCELLENT**  
Fluorescence **NONE**  
Inscription(s) **(IGI) 749558649**



January 2, 2026  
IGI Report No 749558649  
**MODIFIED KITE STEP CUT**  
11.99 X 4.51 X 3.18 MM  
1.02 CARAT  
J  
Color Grade  
VS 2  
VERY GOOD  
70.5%  
67%  
Thin To Medium  
Pointed  
EXCELLENT  
EXCELLENT  
NONE  
(IGI) 749558649

**DIAMOND REPORT**

January 2, 2026  
IGI Report Number **749558649**  
Description **NATURAL DIAMOND**  
Shape and Cutting Style **MODIFIED KITE STEP CUT**  
Measurements **11.99 X 4.51 X 3.18 MM**

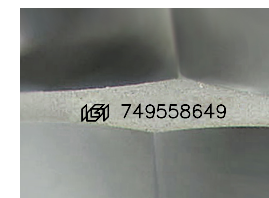
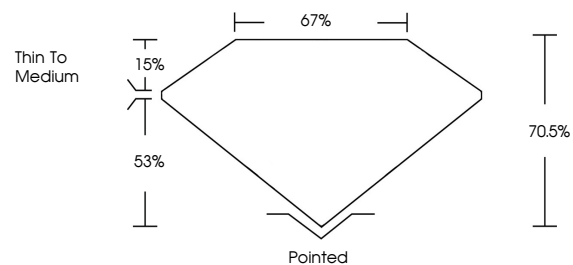
**GRADING RESULTS**

Carat Weight **1.02 CARAT**  
Color Grade **J**  
Clarity Grade **VS 2**  
Cut Grade **VERY GOOD**

**ADDITIONAL GRADING INFORMATION**

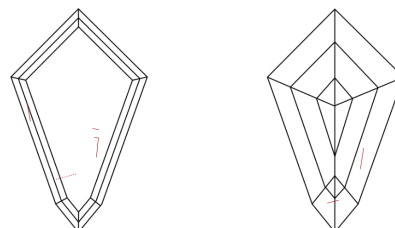
Polish **EXCELLENT**  
Symmetry **EXCELLENT**  
Fluorescence **NONE**  
Inscription(s) **(IGI) 749558649**

**PROPORTIONS**



Sample Image Used

**CLARITY CHARACTERISTICS**



**KEY TO SYMBOLS**

Red symbols indicate internal characteristics.  
Green symbols indicate external characteristics.

**COLOR**

D - F	G - J	K - M	N - R	S - Z	FANCY
Colorless	Near Colorless	Slightly Tinted	Very Light Color	Light Color	

**CLARITY**

FL	IF	VVS <sup>1-2</sup>	VS <sup>1-2</sup>	SI <sup>1-2</sup>	I <sup>1-3</sup>
Flawless	Internally Flawless	Very Very Slightly Included	Very Slightly Included	Slightly Included	Included

