



**ELECTRONIC COPY**

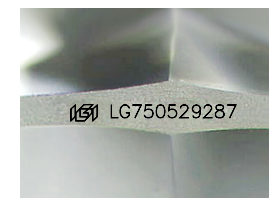
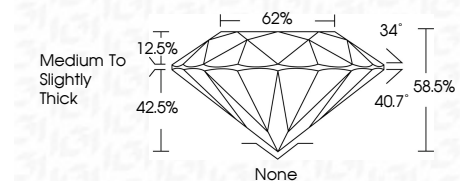
LG750529287  
Report verification at igi.org



November 27, 2025  
IGI Report Number **LG750529287**  
Description **LABORATORY GROWN DIAMOND**  
Shape and Cutting Style **ROUND BRILLIANT**  
Measurements **6.65 - 6.72 X 3.91 MM**

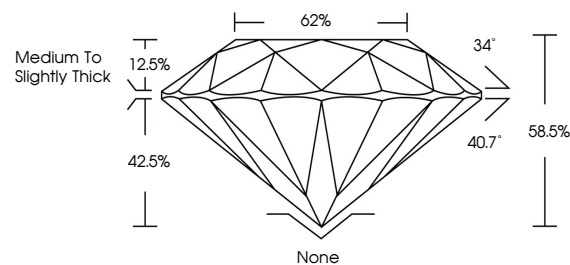
**GRADING RESULTS**

Carat Weight **1.07 CARAT**  
Color Grade **U-V**  
Clarity Grade **VS 2**  
Cut Grade **VERY GOOD**

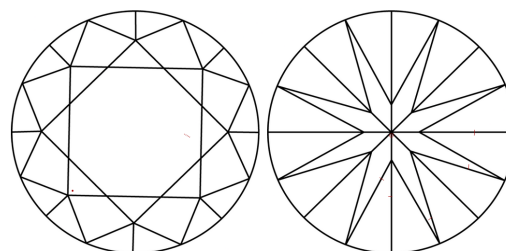


Sample Image Used

**PROPORTIONS**



**CLARITY CHARACTERISTICS**



**KEY TO SYMBOLS**

Red symbols indicate internal characteristics.  
Green symbols indicate external characteristics.

**COLOR**

D E F G H I J Faint Very Light Light

**CLARITY**

FL	IF	VS <sup>1-2</sup>	VS <sup>1-2</sup>	SI <sup>1-2</sup>	I <sup>1-3</sup>
Flawless	Internally Flawless	Very Very Slightly Included	Very Slightly Included	Slightly Included	Included

**ADDITIONAL GRADING INFORMATION**

Polish **VERY GOOD**  
Symmetry **GOOD**  
Fluorescence **NONE**  
Inscription(s) **IGI LG750529287**  
Comments: This Laboratory Grown Diamond was created by Chemical Vapor Deposition (CVD) growth process.  
Type IIa  
Light Brown



**IGI**



November 27, 2025  
IGI Report No LG750529287  
**ROUND BRILLIANT**  
6.65 - 6.72 X 3.91 MM  
1.07 CARAT  
U-V  
Color Grade  
VERY GOOD  
VS 2  
88.05%  
62%  
Medium To Slightly Thick  
None  
VERY GOOD  
GOOD  
NONE  
IGI LG750529287  
Inscription(s)  
Comments: This Laboratory Grown Diamond was created by Chemical Vapor Deposition (CVD) growth process.  
Type IIa  
Light Brown