



ELECTRONIC COPY

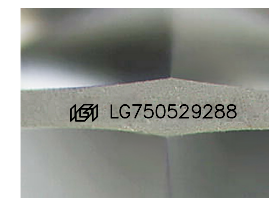
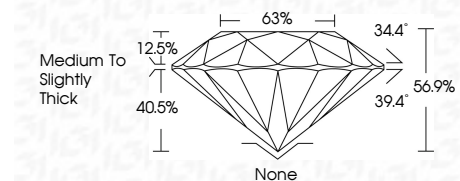
LG750529288
Report verification at igi.org



November 27, 2025
IGI Report Number **LG750529288**
Description **LABORATORY GROWN DIAMOND**
Shape and Cutting Style **ROUND BRILLIANT**
Measurements **6.67 - 6.70 X 3.80 MM**

GRADING RESULTS

Carat Weight **1.05 CARAT**
Color Grade **U-V**
Clarity Grade **VS 1**
Cut Grade **FAIR**



Sample Image Used

ADDITIONAL GRADING INFORMATION

Polish **VERY GOOD**
Symmetry **GOOD**
Fluorescence **NONE**
Inscription(s) **(IGI) LG750529288**
Comments: This Laboratory Grown Diamond was created by Chemical Vapor Deposition (CVD) growth process.
Type IIa
Light Brown



November 27, 2025
IGI Report No LG750529288
ROUND BRILLIANT
6.67 - 6.70 X 3.80 MM
1.05 CARAT
U-V
VS 1
FAIR
66.9%
68%
Medium To Slightly Thick
None
VERY GOOD
GOOD
NONE
IGI LG750529288
Inscription(s)
Comments: This Laboratory Grown Diamond was created by Chemical Vapor Deposition (CVD) growth process.
Type IIa
Light Brown

LABORATORY GROWN DIAMOND REPORT

November 27, 2025
IGI Report Number **LG750529288**
Description **LABORATORY GROWN DIAMOND**
Shape and Cutting Style **ROUND BRILLIANT**
Measurements **6.67 - 6.70 X 3.80 MM**

GRADING RESULTS

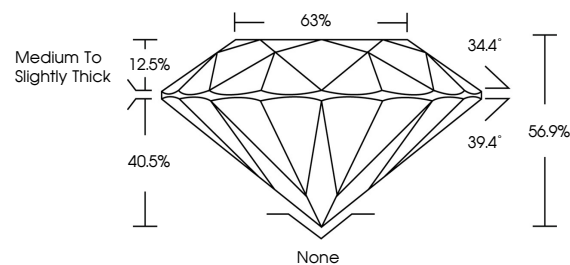
Carat Weight **1.05 CARAT**
Color Grade **U-V**
Clarity Grade **VS 1**
Cut Grade **FAIR**

ADDITIONAL GRADING INFORMATION

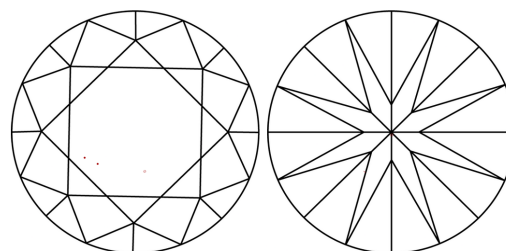
Polish **VERY GOOD**
Symmetry **GOOD**
Fluorescence **NONE**
Inscription(s) **(IGI) LG750529288**

Comments: This Laboratory Grown Diamond was created by Chemical Vapor Deposition (CVD) growth process.
Type IIa
Light Brown

PROPORTIONS



CLARITY CHARACTERISTICS



KEY TO SYMBOLS

Red symbols indicate internal characteristics.
Green symbols indicate external characteristics.

COLOR

D E F G H I J Faint Very Light Light

CLARITY

FL	IF	VS ¹⁻²	VS ¹⁻²	SI ¹⁻²	I ¹⁻³
Flawless	Internally Flawless	Very Very Slightly Included	Very Slightly Included	Slightly Included	Included

