



ELECTRONIC COPY

LG752554828
Report verification at igi.org



December 10, 2025
IGI Report Number **LG752554828**
Description **LABORATORY GROWN DIAMOND**
Shape and Cutting Style **OVAL BRILLIANT**
Measurements **15.69 X 10.74 X 6.64 MM**
GRADING RESULTS
Carat Weight **7.03 CARATS**
Color Grade **F**
Clarity Grade **VVS 1**
Cut Grade **EXCELLENT**

December 10, 2025
IGI Report Number **LG752554828**
Description **LABORATORY GROWN DIAMOND**
Shape and Cutting Style **OVAL BRILLIANT**
Measurements **15.69 X 10.74 X 6.64 MM**

GRADING RESULTS

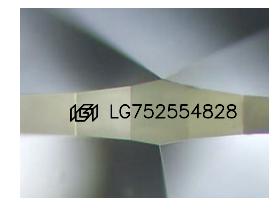
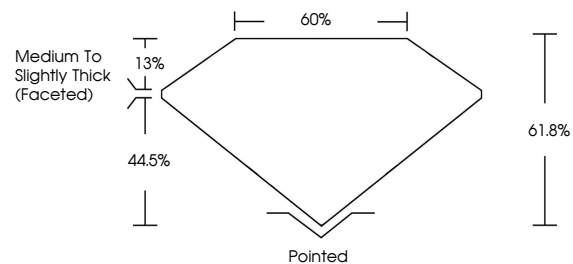
Carat Weight **7.03 CARATS**
Color Grade **F**
Clarity Grade **VVS 1**
Cut Grade **EXCELLENT**

ADDITIONAL GRADING INFORMATION

Polish **EXCELLENT**
Symmetry **EXCELLENT**
Fluorescence **NONE**
Inscription(s) **IGI LG752554828**

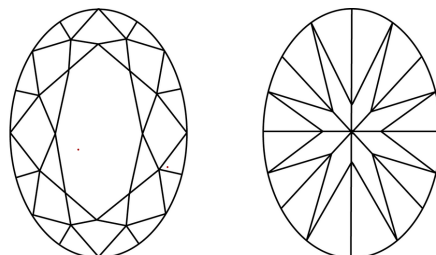
Comments: This Laboratory Grown Diamond was created by Chemical Vapor Deposition (CVD) growth process. Type IIa

PROPORTIONS



Sample Image Used

CLARITY CHARACTERISTICS



KEY TO SYMBOLS

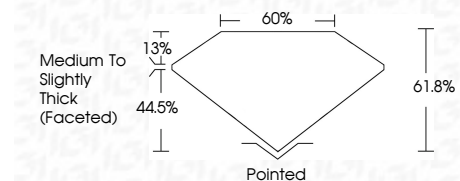
Red symbols indicate internal characteristics.
Green symbols indicate external characteristics.

COLOR

D E F G H I J Faint Very Light Light

CLARITY

FL	IF	VVS ¹⁻²	VS ¹⁻²	SI ¹⁻²	I ¹⁻³
Flawless	Internally Flawless	Very Very Slightly Included	Very Slightly Included	Slightly Included	Included



ADDITIONAL GRADING INFORMATION

Polish **EXCELLENT**
Symmetry **EXCELLENT**
Fluorescence **NONE**
Inscription(s) **IGI LG752554828**
Comments: This Laboratory Grown Diamond was created by Chemical Vapor Deposition (CVD) growth process. Type IIa



IGI



December 10, 2025
IGI Report No LG752554828
OVAL BRILLIANT
15.69 X 10.74 X 6.64 MM
7.03 CARATS
F
VVS 1
EXCELLENT
61.8%
66%
Medium To Slightly Thick (Faceted)
Pointed
EXCELLENT
EXCELLENT
NONE
IGI LG752554828
Comments: This Laboratory Grown Diamond was created by Chemical Vapor Deposition (CVD) growth process. Type IIa