



**ELECTRONIC COPY**

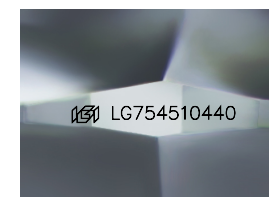
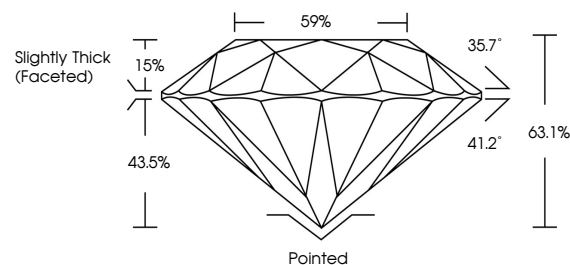
LG754510440  
Report verification at igi.org



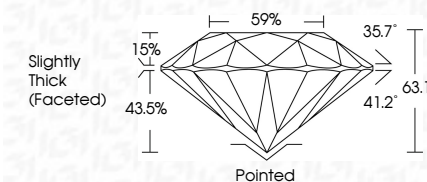
February 27, 2026  
IGI Report Number **LG754510440**  
Description **LABORATORY GROWN DIAMOND**  
Shape and Cutting Style **ROUND BRILLIANT**  
Measurements **8.78 - 8.84 X 5.56 MM**  
**GRADING RESULTS**  
Carat Weight **2.71 CARATS**  
Color Grade **K**  
Clarity Grade **VS 1**  
Cut Grade **EXCELLENT**

February 27, 2026  
IGI Report Number **LG754510440**  
Description **LABORATORY GROWN DIAMOND**  
Shape and Cutting Style **ROUND BRILLIANT**  
Measurements **8.78 - 8.84 X 5.56 MM**  
**GRADING RESULTS**  
Carat Weight **2.71 CARATS**  
Color Grade **K**  
Clarity Grade **VS 1**  
Cut Grade **EXCELLENT**

**PROPORTIONS**



Sample Image Used



**ADDITIONAL GRADING INFORMATION**  
Polish **EXCELLENT**  
Symmetry **EXCELLENT**  
Fluorescence **NONE**  
Inscription(s) **IGI LG754510440**

Comments: This Laboratory Grown Diamond was created by Chemical Vapor Deposition (CVD) growth process. Type IIa

**COLOR**

D E F G H I J Faint Very Light Light

**CLARITY**

FL	IF	VS <sup>1-2</sup>	VS <sup>1-2</sup>	SI <sup>1-2</sup>	I <sup>1-3</sup>
Flawless	Internally Flawless	Very Very Slightly Included	Very Slightly Included	Slightly Included	Included

**ADDITIONAL GRADING INFORMATION**

Polish **EXCELLENT**  
Symmetry **EXCELLENT**  
Fluorescence **NONE**  
Inscription(s) **IGI LG754510440**  
Comments: This Laboratory Grown Diamond was created by Chemical Vapor Deposition (CVD) growth process. Type IIa



**IGI**



February 27, 2026  
IGI Report No LG754510440  
**ROUND BRILLIANT**  
8.78 - 8.84 X 5.56 MM  
2.71 CARATS  
Color Grade **K**  
Clarity Grade **VS 1**  
Depth **EXCELLENT**  
Table **63.1%**  
Girdle **59%**  
Slightly Thick (Faceted)  
Culet **Pointed**  
Polish **EXCELLENT**  
Symmetry **EXCELLENT**  
Fluorescence **NONE**  
Inscriptions(s) **IGI LG754510440**  
Comments: This Laboratory Grown Diamond was created by Chemical Vapor Deposition (CVD) growth process. Type IIa