



**ELECTRONIC COPY**

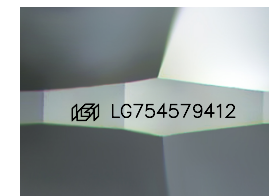
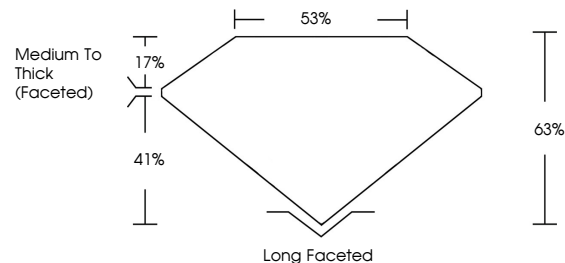
**LABORATORY GROWN DIAMOND REPORT**

December 8, 2025  
 IGI Report Number **LG754579412**  
 Description **LABORATORY GROWN DIAMOND**  
 Shape and Cutting Style **CUSHION MODIFIED BRILLIANT**  
 Measurements **9.73 X 7.83 X 4.93 MM**  
**GRADING RESULTS**  
 Carat Weight **2.73 CARATS**  
 Color Grade **D**  
 Clarity Grade **VVS 1**

**ADDITIONAL GRADING INFORMATION**

Polish **EXCELLENT**  
 Symmetry **EXCELLENT**  
 Fluorescence **NONE**  
 Inscription(s) **IGI LG754579412**  
 Comments: This Laboratory Grown Diamond was created by Chemical Vapor Deposition (CVD) growth process.  
 Type IIa

**PROPORTIONS**



Sample Image Used

**COLOR**

D E F G H I J Faint Very Light Light

**CLARITY**

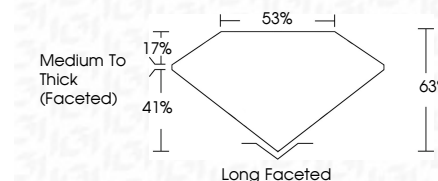
FL	IF	VVS <sup>1-2</sup>	VS <sup>1-2</sup>	SI <sup>1-2</sup>	I <sup>1-3</sup>
Flawless	Internally Flawless	Very Very Slightly Included	Very Slightly Included	Slightly Included	Included



December 8, 2025  
 IGI Report Number **LG754579412**  
 Description **LABORATORY GROWN DIAMOND**  
 Shape and Cutting Style **CUSHION MODIFIED BRILLIANT**  
 Measurements **9.73 X 7.83 X 4.93 MM**  
**GRADING RESULTS**  
 Carat Weight **2.73 CARATS**  
 Color Grade **D**  
 Clarity Grade **VVS 1**

**ADDITIONAL GRADING INFORMATION**

Polish **EXCELLENT**  
 Symmetry **EXCELLENT**  
 Fluorescence **NONE**  
 Inscription(s) **IGI LG754579412**  
 Comments: This Laboratory Grown Diamond was created by Chemical Vapor Deposition (CVD) growth process.  
 Type IIa



December 8, 2025  
 IGI Report No **LG754579412**  
**CUSHION MODIFIED BRILLIANT**  
 9.73 X 7.83 X 4.93 MM  
 Carat Weight **2.73 CARATS**  
 Color Grade **D**  
 Clarity Grade **VVS 1**  
 Depth **63%**  
 Table **53%**  
 Girdle **Medium To Thick (Faceted)**  
 Culet **Long Faceted**  
 Polish **EXCELLENT**  
 Symmetry **EXCELLENT**  
 Fluorescence **NONE**  
 Inscription(s) **IGI LG754579412**  
 Comments: This Laboratory Grown Diamond was created by Chemical Vapor Deposition (CVD) growth process.  
 Type IIa