



INTERNATIONAL  
GEMOLOGICAL  
INSTITUTE

ELECTRONIC COPY  
LABORATORY GROWN DIAMOND REPORT

December 5, 2025  
IGI Report Number LG754579449  
Description LABORATORY GROWN DIAMOND  
Shape and Cutting Style OVAL BRILLIANT  
Measurements 11.90 x 8.18 x 5.07 mm

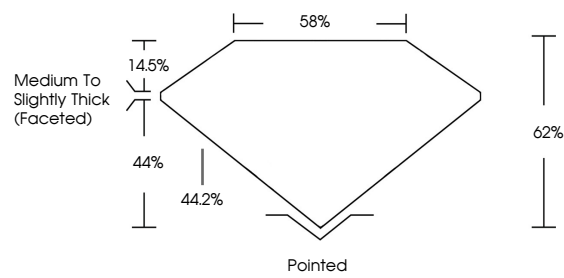
GRADING RESULTS  
Carat Weight 3.01 CARATS  
Color Grade D  
Clarity Grade VVS 2

ADDITIONAL GRADING INFORMATION  
Polish EXCELLENT  
Symmetry EXCELLENT  
Fluorescence NONE  
Inscription(s) IGI LG754579449

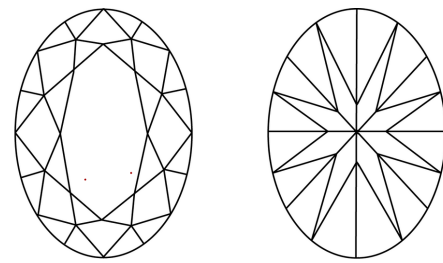
Comments: This Laboratory Grown Diamond was created by Chemical Vapor Deposition (CVD) growth process.  
Type IIa

LG754579449  
Report verification at igi.org

PROPORTIONS

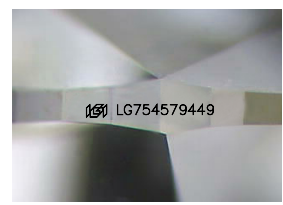


CLARITY CHARACTERISTICS



KEY TO SYMBOLS

Red symbols indicate internal characteristics.  
Green symbols indicate external characteristics.



Sample Image Used

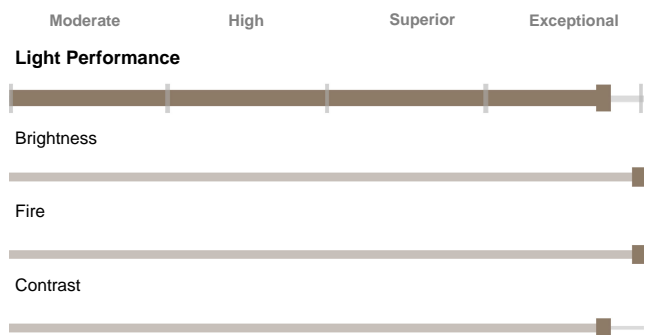
www.igi.org

LIGHT PERFORMANCE REPORT

Light Performance Grade: Exceptional



Structured Light Environment Representation



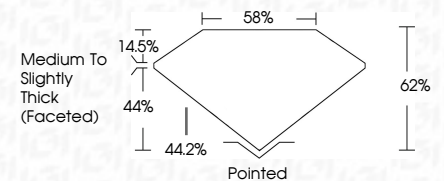
COLOR



CLARITY



December 5, 2025  
IGI Report Number LG754579449  
Description LABORATORY GROWN DIAMOND  
Shape and Cutting Style OVAL BRILLIANT  
Measurements 11.90 X 8.18 X 5.07 MM  
GRADING RESULTS  
Carat Weight 3.01 CARATS  
Color Grade D  
Clarity Grade VVS 2



ADDITIONAL GRADING INFORMATION  
Polish EXCELLENT  
Symmetry EXCELLENT  
Fluorescence NONE  
Inscription(s) IGI LG754579449  
Comments: This Laboratory Grown Diamond was created by Chemical Vapor Deposition (CVD) growth process.  
Type IIa



IGI

December 5, 2025 IGI Report No LG754579449 OVAL BRILLIANT	11.90 X 8.18 X 5.07 MM Carat Weight 3.01 CARATS Color Grade D Depth 62% Table 58% Girdle Medium To Slightly Thick (Faceted)	Clarity Grade VVS 2 Symmetry EXCELLENT Polish EXCELLENT Fluorescence NONE Inscription(s) IGI LG754579449	Comments: This Laboratory Grown Diamond was created by Chemical Vapor Deposition (CVD) growth process. Type IIa
---	--	--	--