



ELECTRONIC COPY

LG756541938
Report verification at igi.org



December 9, 2025
IGI Report Number LG756541938
Description LABORATORY GROWN DIAMOND
Shape and Cutting Style ROUND BRILLIANT
Measurements 8.14 - 8.21 X 5.01 MM
GRADING RESULTS
Carat Weight 2.08 CARATS
Color Grade F
Clarity Grade VVS 2
Cut Grade IDEAL

December 9, 2025
IGI Report Number LG756541938
Description LABORATORY GROWN DIAMOND
Shape and Cutting Style ROUND BRILLIANT
Measurements 8.14 - 8.21 X 5.01 MM

GRADING RESULTS

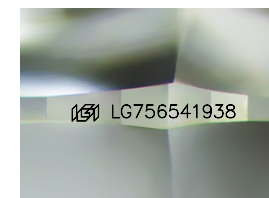
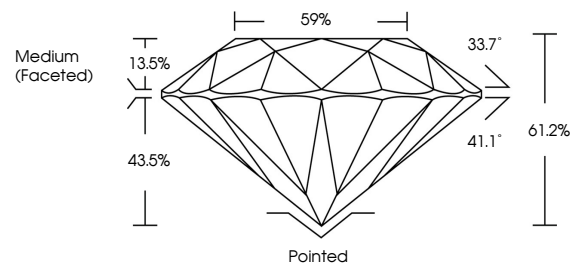
Carat Weight 2.08 CARATS
Color Grade F
Clarity Grade VVS 2
Cut Grade IDEAL

ADDITIONAL GRADING INFORMATION

Polish EXCELLENT
Symmetry EXCELLENT
Fluorescence NONE
Inscription(s) IGI LG756541938

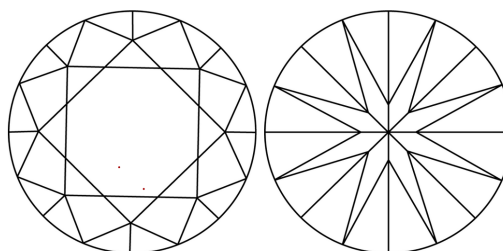
Comments: This Laboratory Grown Diamond was created by Chemical Vapor Deposition (CVD) growth process. Type IIa

PROPORTIONS



Sample Image Used

CLARITY CHARACTERISTICS



KEY TO SYMBOLS

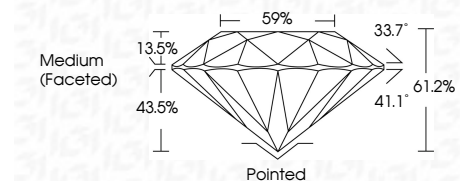
Red symbols indicate internal characteristics.
Green symbols indicate external characteristics.

COLOR

D E F G H I J Faint Very Light Light

CLARITY

FL IF VVS 1-2 VS 1-2 SI 1-2 I 1-3
Flawless Internally Flawless Very Very Slightly Included Very Slightly Included Slightly Included Included



ADDITIONAL GRADING INFORMATION

Polish EXCELLENT
Symmetry EXCELLENT
Fluorescence NONE
Inscription(s) IGI LG756541938
Comments: This Laboratory Grown Diamond was created by Chemical Vapor Deposition (CVD) growth process. Type IIa



December 9, 2025
IGI Report No LG756541938
ROUND BRILLIANT
8.14 - 8.21 X 5.01 MM
2.08 CARATS
Color Grade F
Clarity Grade VVS 2
Cut Grade IDEAL
Depth 61.2%
Table 59%
Girdle Medium (Faceted)
Culet Pointed
Polish EXCELLENT
Symmetry EXCELLENT
Fluorescence NONE
Inscriptions(s) IGI LG756541938
Comments: This Laboratory Grown Diamond was created by Chemical Vapor Deposition (CVD) growth process. Type IIa