



**ELECTRONIC COPY**

## LABORATORY GROWN DIAMOND REPORT

LG756587029  
Report verification at [igi.org](https://igi.org)

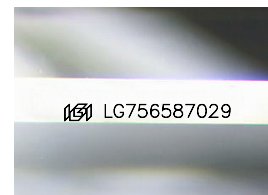
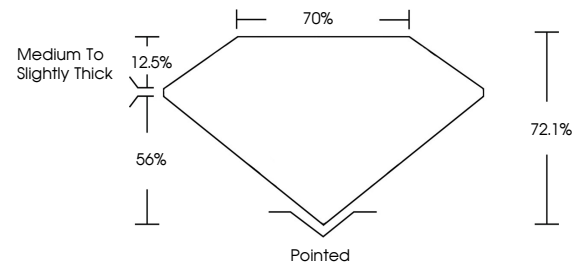
December 13, 2025	
IGI Report Number	LG756587029
Description	LABORATORY GROWN DIAMOND
Shape and Cutting Style	PRINCESS CUT
Measurements	6.45 X 6.39 X 4.61 MM
GRADING RESULTS	
Carat Weight	1.67 CARAT
Color Grade	D
Clarity Grade	VVS 1

### ADDITIONAL GRADING INFORMATION

Polish	EXCELLENT
Symmetry	EXCELLENT
Fluorescence	NONE
Inscription(s)	15 LG756587029

Comments: This Laboratory Grown Diamond was created by Chemical Vapor Deposition (CVD) growth process.  
Type IIa

## PROPORTIONS



Sample Image Used

## COLOR

D E F G H I J Faint Very Light Light

## CLARITY

FL	IF	VVS <sup>1-2</sup>	VS <sup>1-2</sup>	SI <sup>1-2</sup>	I <sup>1-3</sup>
Flawless	Internally Flawless	Very Very Slightly Included	Very Slightly Included	Slightly Included	Included

## LABORATORY GROWN DIAMOND REPORT



December 13, 2025	
IGI Report Number	LG756587029
Description	LABORATORY GROWN DIAMOND
Shape and Cutting Style	PRINCESS CUT
Measurements	6.45 X 6.39 X 4.61 MM
GRADING RESULTS	
Carat Weight	1.67 CARAT
Color Grade	D
Clarity Grade	VVS 1

### ADDITIONAL GRADING INFORMATION

Polish	EXCELLENT
Symmetry	EXCELLENT
Fluorescence	NONE
Inscription(s)	 LG756587029
<p>Comments: This Laboratory Grown Diamond was created by Chemical Vapor Deposition (CVD) growth process.</p> <p>Type IIa</p>	



© IGI 2020, International Gemological Institute

FD - 10 20



THIS DOCUMENT WAS PRODUCED WITH THE FOLLOWING SECURITY MEASURES: SPECIAL DOCUMENT PAPER, INK SCREENS, WATERMARK, BACKGROUND DESIGNS, HOLOGRAM AND OTHER SECURITY FEATURES NOT LISTED AND DO EXCEED DOCUMENT SECURITY INDUSTRY GUIDELINES

**www.igi.org**

December 13, 2025  
GI Report No LG756587029

GI Report No 12756597029	1,67 CARAT
PRINCESS CUT	D
Corat Weight	VVS 1
Color Grade	72.1%
4.65 X 4.65 X 3.95 X 4.61 MM	70%
Clarity Grade	Medium To Slightly
Depth	thick
Table	
Grade	
Claret	Pointed
Symmetry	EXCELLENT
Polish	EXCELLENT
Fluorescence	NONE
Fluorescence(s)	sent 12756597029

**Comments:**  
This Laboratory Grown Diamond was created by Chemical Vapor Deposition (CVD) growth process.