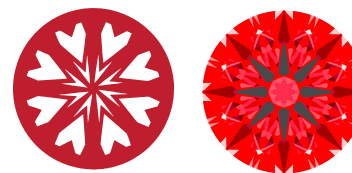




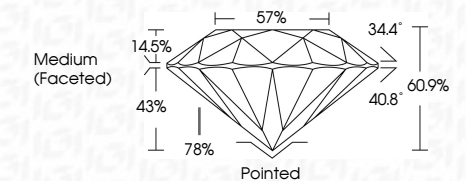
Light Performance Grade: Exceptional



Structured Light Environment Representation



December 12, 2025
 IGI Report Number **LG757507630**
 Description **LABORATORY GROWN DIAMOND**
 Shape and Cutting Style **ROUND BRILLIANT**
 Measurements **8.84 - 8.88 X 5.40 MM**
GRADING RESULTS
 Carat Weight **2.58 CARATS**
 Color Grade **F**
 Clarity Grade **VVS 2**
 Cut Grade **IDEAL**



ADDITIONAL GRADING INFORMATION
 Polish **EXCELLENT**
 Symmetry **EXCELLENT**
 Fluorescence **NONE**
 Inscription(s) **IGI LG757507630**
 Comments: HEARTS & ARROWS
 This Laboratory Grown Diamond was created by Chemical Vapor Deposition (CVD) growth process. Type IIa

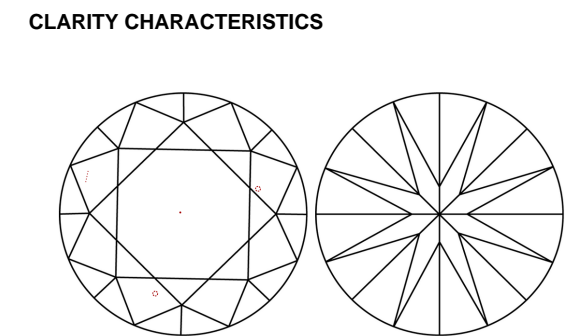
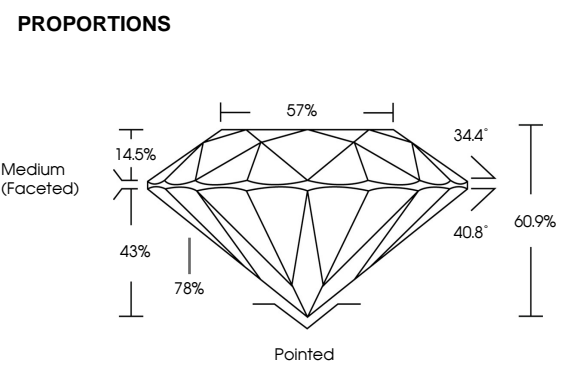
**ELECTRONIC COPY
LABORATORY GROWN DIAMOND REPORT**

December 12, 2025
 IGI Report Number **LG757507630**
 Description **LABORATORY GROWN DIAMOND**
 Shape and Cutting Style **ROUND BRILLIANT**
 Measurements **8.84 - 8.88 x 5.40 mm**

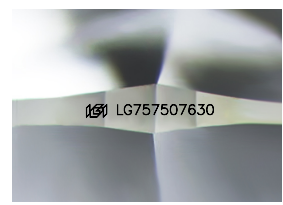
GRADING RESULTS
 Carat Weight **2.58 CARATS**
 Color Grade **F**
 Clarity Grade **VVS 2**
 Cut Grade **IDEAL**

ADDITIONAL GRADING INFORMATION
 Polish **EXCELLENT**
 Symmetry **EXCELLENT**
 Fluorescence **NONE**
 Inscription(s) **IGI LG757507630**

Comments: HEARTS & ARROWS
 This Laboratory Grown Diamond was created by Chemical Vapor Deposition (CVD) growth process. Type IIa



KEY TO SYMBOLS
 Red symbols indicate internal characteristics.
 Green symbols indicate external characteristics.



Sample Image Used



December 12, 2025
 IGI Report No. LG757507630
ROUND BRILLIANT
 8.84 - 8.88 X 5.40 MM
 Carat Weight **2.58 CARATS**
 Color Grade **F**
 Clarity Grade **VVS 2**
 Cut Grade **IDEAL**
 Depth **60.9%**
 Table **57%**
 Girdle **Medium (Faceted)**
 Polish **EXCELLENT**
 Symmetry **EXCELLENT**
 Fluorescence **NONE**
 Inscription(s) **IGI LG757507630**
 Comments: HEARTS & ARROWS
 This Laboratory Grown Diamond was created by Chemical Vapor Deposition (CVD) growth process. Type IIa