



**ELECTRONIC COPY**

LG757525362  
Report verification at igi.org



December 17, 2025

IGI Report Number **LG757525362**

Description **LABORATORY GROWN DIAMOND**

Shape and Cutting Style **ROUND BRILLIANT**

Measurements **8.42 - 8.47 X 5.11 MM**

**GRADING RESULTS**

Carat Weight **2.24 CARATS**

Color Grade **D**

Clarity Grade **VS 1**

Cut Grade **IDEAL**

December 17, 2025

IGI Report Number **LG757525362**

Description **LABORATORY GROWN DIAMOND**

Shape and Cutting Style **ROUND BRILLIANT**

Measurements **8.42 - 8.47 X 5.11 MM**

**GRADING RESULTS**

Carat Weight **2.24 CARATS**

Color Grade **D**

Clarity Grade **VS 1**

Cut Grade **IDEAL**

**ADDITIONAL GRADING INFORMATION**

Polish **EXCELLENT**

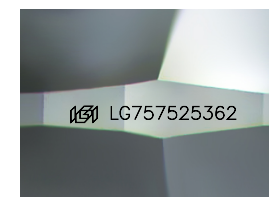
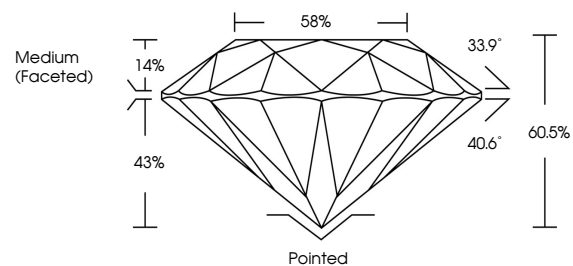
Symmetry **EXCELLENT**

Fluorescence **NONE**

Inscription(s) **IGI LG757525362**

Comments: This Laboratory Grown Diamond was created by Chemical Vapor Deposition (CVD) growth process. Type IIa

**PROPORTIONS**



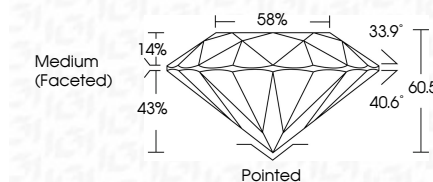
Sample Image Used

**COLOR**

D E F G H I J Faint Very Light Light

**CLARITY**

FL	IF	VS <sup>1-2</sup>	VS <sup>1-2</sup>	SI <sup>1-2</sup>	I <sup>1-3</sup>
Flawless	Internally Flawless	Very Very Slightly Included	Very Slightly Included	Slightly Included	Included



**ADDITIONAL GRADING INFORMATION**

Polish **EXCELLENT**

Symmetry **EXCELLENT**

Fluorescence **NONE**

Inscription(s) **IGI LG757525362**

Comments: This Laboratory Grown Diamond was created by Chemical Vapor Deposition (CVD) growth process. Type IIa



**IGI**



December 17, 2025	IGI Report No LG757525362	2.24 CARATS	D	Pointed	EXCELLENT	EXCELLENT	NONE	IGI LG757525362
ROUND BRILLIANT	8.42 - 8.47 X 5.11 MM	Color Grade	VS 1	Depth	IDEAL	60.5%	58%	Medium (Faceted)
		Clarity Grade	VS 1	Girdle	IDEAL	60.5%	58%	Pointed
		Color Grade	D	Culet	EXCELLENT	EXCELLENT	NONE	EXCELLENT
		Clarity Grade	VS 1	Symmetry	EXCELLENT	EXCELLENT	NONE	EXCELLENT
		Depth	60.5%	Fluorescence	NONE	NONE	NONE	EXCELLENT
		Table	58%	Inscription(s)	IGI LG757525362	IGI LG757525362	IGI LG757525362	IGI LG757525362
		Girdle	Medium (Faceted)	Comments:	This Laboratory Grown Diamond was created by Chemical Vapor Deposition (CVD) growth process. Type IIa	This Laboratory Grown Diamond was created by Chemical Vapor Deposition (CVD) growth process. Type IIa	This Laboratory Grown Diamond was created by Chemical Vapor Deposition (CVD) growth process. Type IIa	This Laboratory Grown Diamond was created by Chemical Vapor Deposition (CVD) growth process. Type IIa