



**ELECTRONIC COPY**

LG761553026  
Report verification at [igi.org](http://igi.org)



February 19, 2026  
IGI Report Number **LG761553026**  
Description **LABORATORY GROWN DIAMOND**  
Shape and Cutting Style **ROUND BRILLIANT**  
Measurements **6.48 - 6.55 X 4.01 MM**  
**GRADING RESULTS**  
Carat Weight **1.04 CARAT**  
Color Grade **D**  
Clarity Grade **FLAWLESS**  
Cut Grade **IDEAL**

February 19, 2026  
IGI Report Number **LG761553026**  
Description **LABORATORY GROWN DIAMOND**  
Shape and Cutting Style **ROUND BRILLIANT**  
Measurements **6.48 - 6.55 X 4.01 MM**

**GRADING RESULTS**

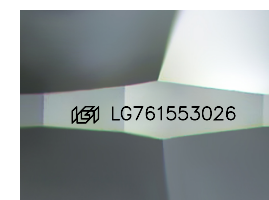
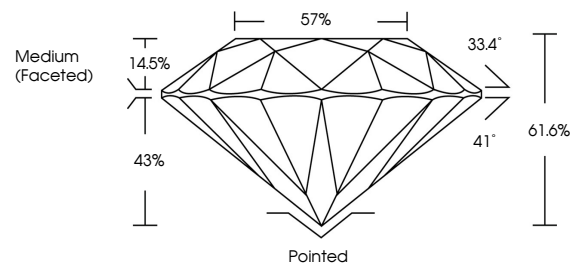
Carat Weight **1.04 CARAT**  
Color Grade **D**  
Clarity Grade **FLAWLESS**  
Cut Grade **IDEAL**

**ADDITIONAL GRADING INFORMATION**

Polish **EXCELLENT**  
Symmetry **EXCELLENT**  
Fluorescence **NONE**  
Inscription(s) **LG761553026**

Comments: As Grown - No indication of post-growth treatment.  
This Laboratory Grown Diamond was created by High Pressure High Temperature (HPHT) growth process.  
Type II

**PROPORTIONS**



Sample Image Used

**CLARITY CHARACTERISTICS**



**KEY TO SYMBOLS**

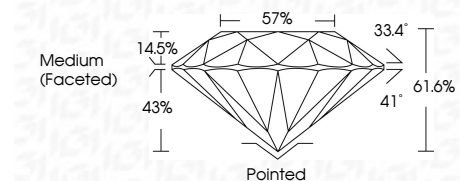
Red symbols indicate internal characteristics.  
Green symbols indicate external characteristics.

**COLOR**

D E F G H I J Faint Very Light Light

**CLARITY**

FL	IF	VS <sup>1-2</sup>	VS <sup>1-2</sup>	SI <sup>1-2</sup>	I <sup>1-3</sup>
Flawless	Internally Flawless	Very Very Slightly Included	Very Slightly Included	Slightly Included	Included



**ADDITIONAL GRADING INFORMATION**

Polish **EXCELLENT**  
Symmetry **EXCELLENT**  
Fluorescence **NONE**  
Inscription(s) **LG761553026**  
Comments: As Grown - No indication of post-growth treatment.  
This Laboratory Grown Diamond was created by High Pressure High Temperature (HPHT) growth process.  
Type II



**IGI**



February 19, 2026  
IGI Report No **LG761553026**  
**ROUND BRILLIANT**  
1.04 CARAT  
D  
Carat Weight  
Color Grade **FLAWLESS**  
Clarity Grade **IDEAL**  
Cut Grade **IDEAL**  
Depth 61.6%  
Table 57%  
Girdle  
Medium (Faceted)  
Culet  
Pointed  
Polish **EXCELLENT**  
Symmetry **EXCELLENT**  
Fluorescence **NONE**  
Inscriptions(s) **LG761553026**  
Comments: As Grown - No indication of post-growth treatment.  
This Laboratory Grown Diamond was created by High Pressure High Temperature (HPHT) growth process.  
Type II