



**ELECTRONIC COPY**

765612841  
Report verification at [igi.org](http://igi.org)

**DIAMOND REPORT**

March 26, 2026  
IGI Report Number **765612841**  
Description **NATURAL DIAMOND**  
Shape and Cutting Style **ROUND BRILLIANT**  
Measurements **8.57 - 8.63 X 5.44 MM**

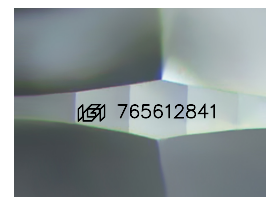
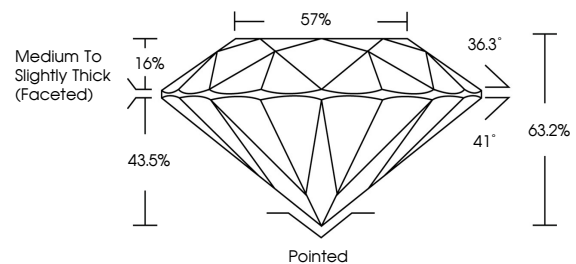
**GRADING RESULTS**

Carat Weight **2.51 CARATS**  
Color Grade **J**  
Clarity Grade **VS 1**  
Cut Grade **EXCELLENT**

**ADDITIONAL GRADING INFORMATION**

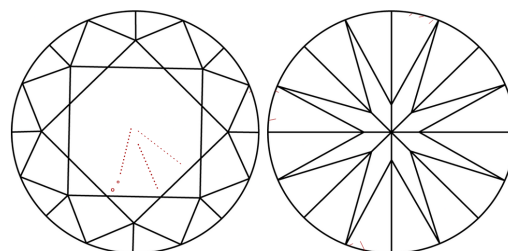
Polish **EXCELLENT**  
Symmetry **EXCELLENT**  
Fluorescence **NONE**  
Inscription(s) **765612841**

**PROPORTIONS**



Sample Image Used

**CLARITY CHARACTERISTICS**



**KEY TO SYMBOLS**

Red symbols indicate internal characteristics.  
Green symbols indicate external characteristics.

**COLOR**

D - F	G - J	K - M	N - R	S - Z	FANCY
Colorless	Near Colorless	Slightly Tinted	Very Light Color	Light Color	

**CLARITY**

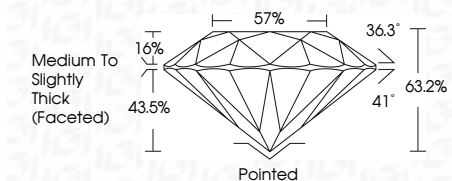
FL	IF	VVS 1-2	VS 1-2	SI 1-2	I 1-3
Flawless	Internally Flawless	Very Very Slightly Included	Very Slightly Included	Slightly Included	Included



March 26, 2026  
IGI Report Number **765612841**  
Description **NATURAL DIAMOND**  
Shape and Cutting Style **ROUND BRILLIANT**  
Measurements **8.57 - 8.63 X 5.44 MM**

**GRADING RESULTS**

Carat Weight **2.51 CARATS**  
Color Grade **J**  
Clarity Grade **VS 1**  
Cut Grade **EXCELLENT**



**ADDITIONAL GRADING INFORMATION**

Polish **EXCELLENT**  
Symmetry **EXCELLENT**  
Fluorescence **NONE**  
Inscription(s) **765612841**



**IGI**



March 26, 2026  
IGI Report No 765612841  
**ROUND BRILLIANT**  
8.57 - 8.63 X 5.44 MM  
2.51 CARATS  
J  
EXCELLENT  
VS 1  
63.2%  
57%  
Medium To Slightly Thick (Faceted)  
Pointed  
EXCELLENT  
EXCELLENT  
NONE  
IGI 765612841