



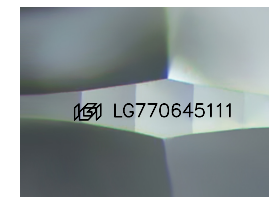
ELECTRONIC COPY

LG770645111
Report verification at igi.org

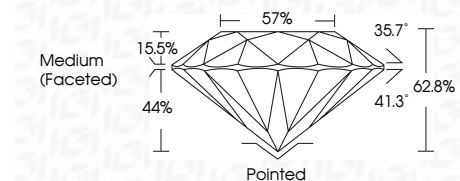


March 18, 2026
IGI Report Number LG770645111
Description LABORATORY GROWN DIAMOND
Shape and Cutting Style ROUND BRILLIANT
Measurements 9.19 - 9.26 X 5.79 MM

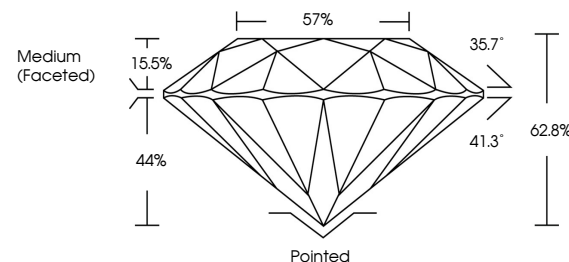
GRADING RESULTS
Carat Weight 3.01 CARATS
Color Grade FANCY VIVID YELLOW
Clarity Grade VVS 2
Cut Grade EXCELLENT



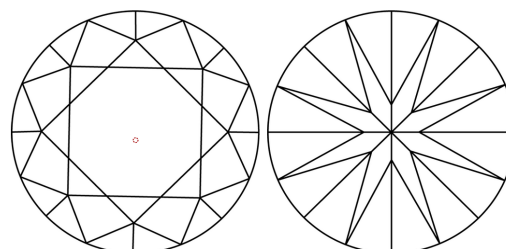
Sample Image Used



PROPORTIONS



CLARITY CHARACTERISTICS



KEY TO SYMBOLS

Red symbols indicate internal characteristics.
Green symbols indicate external characteristics.

COLOR

D E F G H I J Faint Very Light Light

CLARITY

FL IF VVS 1-2 VS 1-2 SI 1-2 I 1-3
Flawless Internally Flawless Very Very Slightly Included Very Slightly Included Slightly Included Included

ADDITIONAL GRADING INFORMATION

Polish EXCELLENT
Symmetry EXCELLENT
Fluorescence VERY SLIGHT
Inscription(s) IGI LG770645111

Comments: This Laboratory Grown Diamond was created by High Pressure High Temperature (HPHT) growth process.



Summary of report details including date, report number, description, measurements, grading results, and additional information.