



ELECTRONIC COPY

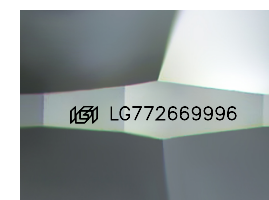
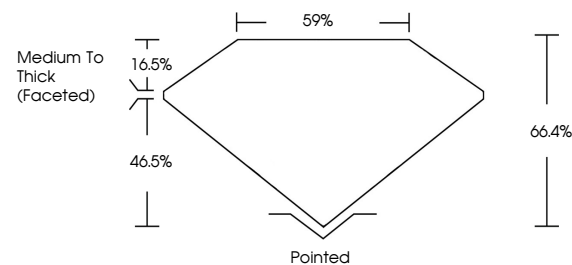
LG772669996
Report verification at igi.org



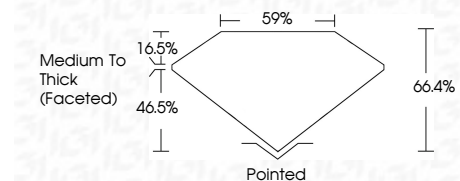
March 11, 2026
IGI Report Number **LG772669996**
Description **LABORATORY GROWN DIAMOND**
Shape and Cutting Style **SQUARE CUSHION MODIFIED BRILLIANT**
Measurements **7.11 X 7.08 X 4.70 MM**
GRADING RESULTS
Carat Weight **2.02 CARATS**
Color Grade **FANCY INTENSE YELLOW**
Clarity Grade **VS 2**

March 11, 2026
IGI Report Number **LG772669996**
Description **LABORATORY GROWN DIAMOND**
Shape and Cutting Style **SQUARE CUSHION MODIFIED BRILLIANT**
Measurements **7.11 X 7.08 X 4.70 MM**

PROPORTIONS



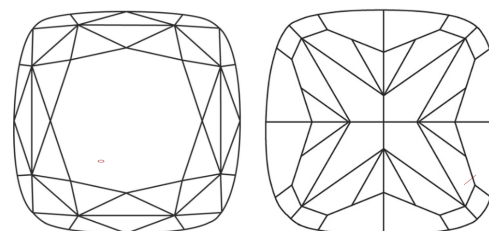
Sample Image Used



GRADING RESULTS

Carat Weight **2.02 CARATS**
Color Grade **FANCY INTENSE YELLOW**
Clarity Grade **VS 2**

CLARITY CHARACTERISTICS



KEY TO SYMBOLS

Red symbols indicate internal characteristics.
Green symbols indicate external characteristics.

COLOR

D E F G H I J Faint Very Light Light

CLARITY

FL	IF	VS ¹⁻²	VS ¹⁻²	SI ¹⁻²	I ¹⁻³
Flawless	Internally Flawless	Very Very Slightly Included	Very Slightly Included	Slightly Included	Included

ADDITIONAL GRADING INFORMATION

Polish **VERY GOOD**
Symmetry **VERY GOOD**
Fluorescence **NONE**
Inscription(s) **IGI LG772669996**
Comments: This Laboratory Grown Diamond was created by Chemical Vapor Deposition (CVD) growth process.

ADDITIONAL GRADING INFORMATION

Polish **VERY GOOD**
Symmetry **VERY GOOD**
Fluorescence **NONE**
Inscription(s) **IGI LG772669996**

Comments: This Laboratory Grown Diamond was created by Chemical Vapor Deposition (CVD) growth process.



March 11, 2026
IGI Report No **LG772669996**
SQUARE CUSHION MODIFIED BRILLIANT
7.11 X 7.08 X 4.70 MM
2.02 CARATS
Carat Weight
Color Grade **FANCY INTENSE YELLOW**
Clarity Grade **VS 2**
Depth **66.4%**
Table **59%**
Girdle **Medium To Thick (Faceted)**
Culet **Pointed**
Polish **VERY GOOD**
Symmetry **VERY GOOD**
Fluorescence **NONE**
Inscription(s) **IGI LG772669996**
Comments: This Laboratory Grown Diamond was created by Chemical Vapor Deposition (CVD) growth process.