



**ELECTRONIC COPY**

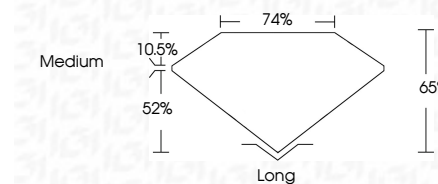
LG775621571  
Report verification at igi.org



March 16, 2026  
IGI Report Number **LG775621571**  
Description **LABORATORY GROWN DIAMOND**  
Shape and Cutting Style **TRAPEZE MIXED CUT**  
Measurements **10.17 X 5.54 X 3.60 MM**

**GRADING RESULTS**

Carat Weight **1.50 CARAT**  
Color Grade **F**  
Clarity Grade **VVS 2**



**ADDITIONAL GRADING INFORMATION**

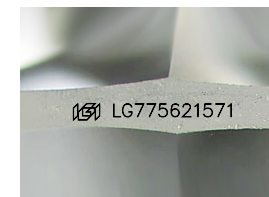
Polish **VERY GOOD**  
Symmetry **VERY GOOD**  
Fluorescence **NONE**  
Inscription(s) **IGI LG775621571**  
Comments: This Laboratory Grown Diamond was created by Chemical Vapor Deposition (CVD) growth process. Type IIa



**IGI**

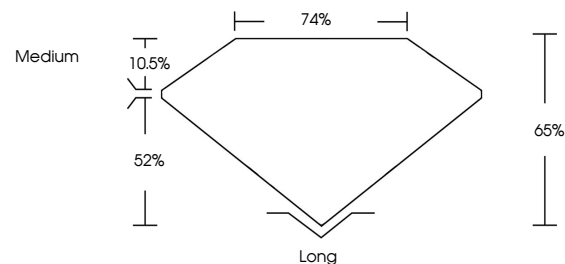
March 16, 2026  
IGI Report No LG775621571  
**TRAPEZE MIXED CUT**  
10.17 X 5.54 X 3.60 MM  
1.50 CARAT  
Color Grade **F**  
Clarity Grade **VVS 2**  
Depth **65%**  
Table **52%**  
Girdle **Medium**  
Culet **Long**  
Polish **VERY GOOD**  
Symmetry **VERY GOOD**  
Fluorescence **NONE**  
Inscription(s) **IGI LG775621571**

Comments: This Laboratory Grown Diamond was created by Chemical Vapor Deposition (CVD) growth process. Type IIa

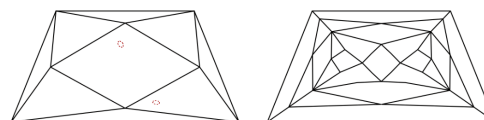


Sample Image Used

**PROPORTIONS**



**CLARITY CHARACTERISTICS**



**KEY TO SYMBOLS**

Red symbols indicate internal characteristics.  
Green symbols indicate external characteristics.

**COLOR**

D E F G H I J Faint Very Light Light

**CLARITY**

FL	IF	VVS <sup>1-2</sup>	VS <sup>1-2</sup>	SI <sup>1-2</sup>	I <sup>1-3</sup>
Flawless	Internally Flawless	Very Very Slightly Included	Very Slightly Included	Slightly Included	Included

