



**ELECTRONIC COPY**

LG778645246  
Report verification at igi.org



March 11, 2026  
IGI Report Number **LG778645246**  
Description **LABORATORY GROWN DIAMOND**  
Shape and Cutting Style **SQUARE CUSHION MODIFIED BRILLIANT**  
Measurements **6.80 X 6.77 X 4.26 MM**  
**GRADING RESULTS**  
Carat Weight **1.58 CARAT**  
Color Grade **FANCY VIVID GREEN**  
Clarity Grade **VVS 2**

March 11, 2026  
IGI Report Number **LG778645246**  
Description **LABORATORY GROWN DIAMOND**  
Shape and Cutting Style **SQUARE CUSHION MODIFIED BRILLIANT**  
Measurements **6.80 X 6.77 X 4.26 MM**

**GRADING RESULTS**

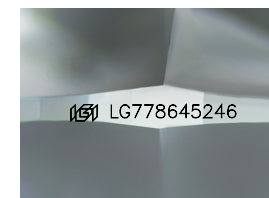
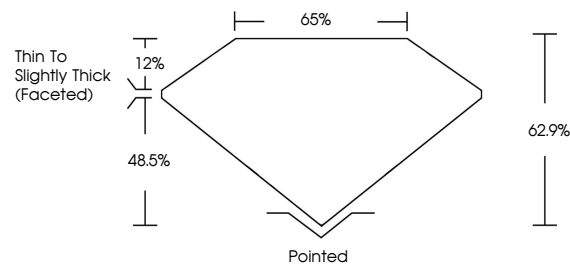
Carat Weight **1.58 CARAT**  
Color Grade **FANCY VIVID GREEN**  
Clarity Grade **VVS 2**

**ADDITIONAL GRADING INFORMATION**

Polish **VERY GOOD**  
Symmetry **VERY GOOD**  
Fluorescence **NONE**  
Inscription(s) **IGI LG778645246**

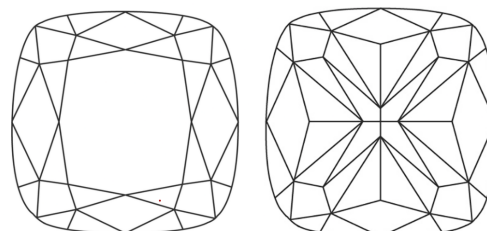
Comments: This Laboratory Grown Diamond was created by Chemical Vapor Deposition (CVD) growth process.  
Indications of post-growth treatment.

**PROPORTIONS**



Sample Image Used

**CLARITY CHARACTERISTICS**



**KEY TO SYMBOLS**

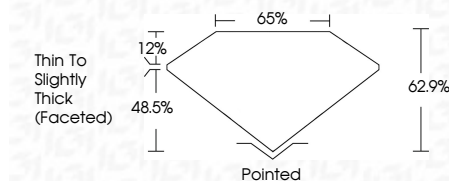
Red symbols indicate internal characteristics.  
Green symbols indicate external characteristics.

**COLOR**

D E F G H I J Faint Very Light Light

**CLARITY**

FL	IF	VVS <sup>1-2</sup>	VS <sup>1-2</sup>	SI <sup>1-2</sup>	I <sup>1-3</sup>
Flawless	Internally Flawless	Very Very Slightly Included	Very Slightly Included	Slightly Included	Included



**ADDITIONAL GRADING INFORMATION**

Polish **VERY GOOD**  
Symmetry **VERY GOOD**  
Fluorescence **NONE**  
Inscription(s) **IGI LG778645246**  
Comments: This Laboratory Grown Diamond was created by Chemical Vapor Deposition (CVD) growth process.  
Indications of post-growth treatment.



March 11, 2026  
IGI Report No LG778645246  
**SQUARE CUSHION MODIFIED BRILLIANT**  
6.80 X 6.77 X 4.26 MM  
1.58 CARAT  
FANCY VIVID GREEN  
VVS 2  
62.9%  
65%  
Thin to Slightly Thick (Faceted)  
Pointed  
VERY GOOD  
VERY GOOD  
NONE  
IGI LG778645246  
Comments: This Laboratory Grown Diamond was created by Chemical Vapor Deposition (CVD) growth process.  
Indications of post-growth treatment.