



**ELECTRONIC COPY**

LG779658172  
Report verification at igi.org



March 2, 2026

IGI Report Number **LG779658172**

Description **LABORATORY GROWN DIAMOND**

Shape and Cutting Style **ROUND BRILLIANT**

Measurements **8.79 - 8.81 X 5.18 MM**

**GRADING RESULTS**

Carat Weight **2.51 CARATS**

Color Grade **D**

Clarity Grade **VS 2**

Cut Grade **EXCELLENT**

March 2, 2026

IGI Report Number **LG779658172**

Description **LABORATORY GROWN DIAMOND**

Shape and Cutting Style **ROUND BRILLIANT**

Measurements **8.79 - 8.81 X 5.18 MM**

**GRADING RESULTS**

Carat Weight **2.51 CARATS**

Color Grade **D**

Clarity Grade **VS 2**

Cut Grade **EXCELLENT**

**ADDITIONAL GRADING INFORMATION**

Polish **EXCELLENT**

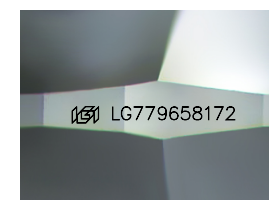
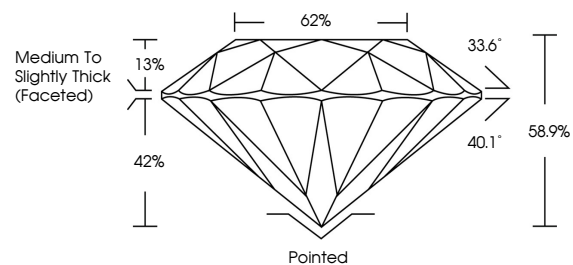
Symmetry **EXCELLENT**

Fluorescence **NONE**

Inscription(s) **IGI LG779658172**

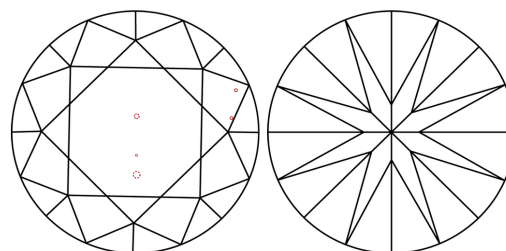
Comments: This Laboratory Grown Diamond was created by Chemical Vapor Deposition (CVD) growth process.  
Type IIa

**PROPORTIONS**



Sample Image Used

**CLARITY CHARACTERISTICS**



**KEY TO SYMBOLS**

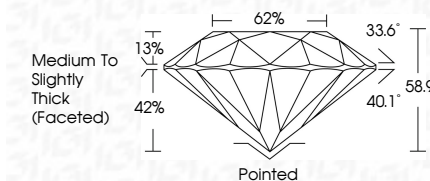
Red symbols indicate internal characteristics.  
Green symbols indicate external characteristics.

**COLOR**

D E F G H I J Faint Very Light Light

**CLARITY**

| FL       | IF                  | VS <sup>1-2</sup>           | VS <sup>1-2</sup>      | SI <sup>1-2</sup> | I <sup>1-3</sup> |
|----------|---------------------|-----------------------------|------------------------|-------------------|------------------|
| Flawless | Internally Flawless | Very Very Slightly Included | Very Slightly Included | Slightly Included | Included         |



**ADDITIONAL GRADING INFORMATION**

Polish **EXCELLENT**

Symmetry **EXCELLENT**

Fluorescence **NONE**

Inscription(s) **IGI LG779658172**

Comments: This Laboratory Grown Diamond was created by Chemical Vapor Deposition (CVD) growth process.  
Type IIa



**IGI**



|                 |                           |              |             |               |           |       |                                    |         |           |           |              |                 |
|-----------------|---------------------------|--------------|-------------|---------------|-----------|-------|------------------------------------|---------|-----------|-----------|--------------|-----------------|
| March 2, 2026   | IGI Report No LG779658172 | 2.51 CARATS  | D           | VS 2          | EXCELLENT | 62%   | Medium To Slightly Thick (Faceted) | Pointed | EXCELLENT | EXCELLENT | NONE         | IGI LG779658172 |
| ROUND BRILLIANT | 8.79 - 8.81 X 5.18 MM     | Carat Weight | Color Grade | Clarity Grade | Cut Grade | Depth | Table                              | Girdle  | Polish    | Symmetry  | Fluorescence | Inscription(s)  |

Comments: This Laboratory Grown Diamond was created by Chemical Vapor Deposition (CVD) growth process.  
Type IIa