



**ELECTRONIC COPY**

LG780649037  
Report verification at igi.org



March 17, 2026  
IGI Report Number **LG780649037**  
Description **LABORATORY GROWN DIAMOND**  
Shape and Cutting Style **CUT CORNERED  
RECTANGULAR MODIFIED  
BRILLIANT**  
Measurements **10.44 X 7.31 X 4.96 MM**  
**GRADING RESULTS**  
Carat Weight **3.22 CARATS**  
Color Grade **D**  
Clarity Grade **VVS 2**

March 17, 2026  
IGI Report Number **LG780649037**  
Description **LABORATORY GROWN DIAMOND**  
Shape and Cutting Style **CUT CORNERED RECTANGULAR  
MODIFIED BRILLIANT**  
Measurements **10.44 X 7.31 X 4.96 MM**

**GRADING RESULTS**

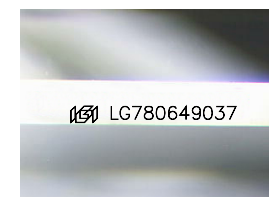
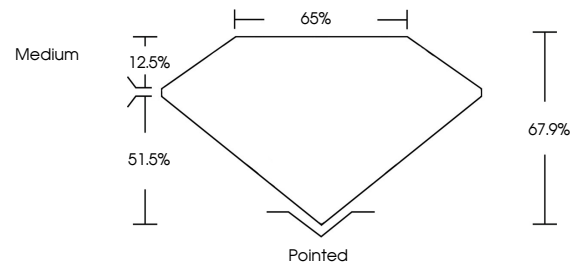
Carat Weight **3.22 CARATS**  
Color Grade **D**  
Clarity Grade **VVS 2**

**ADDITIONAL GRADING INFORMATION**

Polish **EXCELLENT**  
Symmetry **EXCELLENT**  
Fluorescence **NONE**  
Inscription(s) **IGI LG780649037**

Comments: This Laboratory Grown Diamond was created by Chemical Vapor Deposition (CVD) growth process.  
Type IIa

**PROPORTIONS**



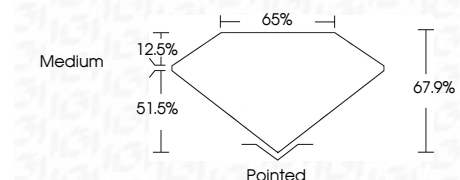
Sample Image Used

**COLOR**

D E F G H I J Faint Very Light Light

**CLARITY**

FL	IF	VVS <sup>1-2</sup>	VS <sup>1-2</sup>	SI <sup>1-2</sup>	I <sup>1-3</sup>
Flawless	Internally Flawless	Very Very Slightly Included	Very Slightly Included	Slightly Included	Included



**ADDITIONAL GRADING INFORMATION**

Polish **EXCELLENT**  
Symmetry **EXCELLENT**  
Fluorescence **NONE**  
Inscription(s) **IGI LG780649037**  
Comments: This Laboratory Grown Diamond was created by Chemical Vapor Deposition (CVD) growth process.  
Type IIa



**IGI**



March 17, 2026  
IGI Report No **LG780649037**  
**CUT CORNERED RECT. MODIFIED BRILLIANT**  
**10.44 X 7.31 X 4.96 MM**  
Carat Weight **3.22 CARATS**  
Color Grade **D**  
Clarity Grade **VVS 2**  
Depth **67.9%**  
Table **65%**  
Girdle **Medium**  
Culet **Pointed**  
Polish **EXCELLENT**  
Symmetry **EXCELLENT**  
Fluorescence **NONE**  
Inscription(s) **IGI LG780649037**  
Comments: This Laboratory Grown Diamond was created by Chemical Vapor Deposition (CVD) growth process.  
Type IIa