



**ELECTRONIC COPY**

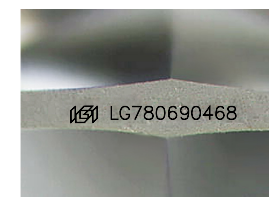
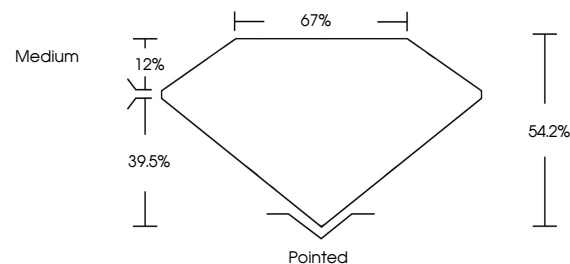
LG780690468  
Report verification at igi.org



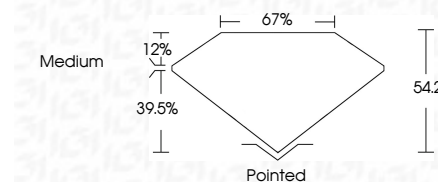
March 16, 2026  
IGI Report Number **LG780690468**  
Description **LABORATORY GROWN DIAMOND**  
Shape and Cutting Style **SHIELD MIXED CUT**  
Measurements **8.19 X 6.92 X 3.75 MM**  
**GRADING RESULTS**  
Carat Weight **1.11 CARAT**  
Color Grade **FANCY VIVID GREEN**  
Clarity Grade **VVS 2**

March 16, 2026  
IGI Report Number **LG780690468**  
Description **LABORATORY GROWN DIAMOND**  
Shape and Cutting Style **SHIELD MIXED CUT**  
Measurements **8.19 X 6.92 X 3.75 MM**  
**GRADING RESULTS**  
Carat Weight **1.11 CARAT**  
Color Grade **FANCY VIVID GREEN**  
Clarity Grade **VVS 2**

**PROPORTIONS**



Sample Image Used



**ADDITIONAL GRADING INFORMATION**

Polish **EXCELLENT**  
Symmetry **EXCELLENT**  
Fluorescence **NONE**  
Inscription(s) **IGI LG780690468**

Comments: This Laboratory Grown Diamond was created by Chemical Vapor Deposition (CVD) growth process.  
Indications of post-growth treatment.

**ADDITIONAL GRADING INFORMATION**

Polish **EXCELLENT**  
Symmetry **EXCELLENT**  
Fluorescence **NONE**  
Inscription(s) **IGI LG780690468**  
Comments: This Laboratory Grown Diamond was created by Chemical Vapor Deposition (CVD) growth process.  
Indications of post-growth treatment.

**COLOR**

D E F G H I J Faint Very Light Light

**CLARITY**

FL	IF	VS <sup>1-2</sup>	VS <sup>1-2</sup>	SI <sup>1-2</sup>	I <sup>1-3</sup>
Flawless	Internally Flawless	Very Very Slightly Included	Very Slightly Included	Slightly Included	Included



**IGI**

March 16, 2026  
IGI Report No **LG780690468**  
**SHIELD MIXED CUT**  
Carat Weight **1.11 CARAT**  
Color Grade **FANCY VIVID GREEN**  
Clarity Grade **VVS 2**  
Depth **54.2%**  
Table **67%**  
Girdle **Medium**  
Culet **Pointed**  
Polish **EXCELLENT**  
Symmetry **EXCELLENT**  
Fluorescence **NONE**  
Inscription(s) **IGI LG780690468**

Comments: This Laboratory Grown Diamond was created by Chemical Vapor Deposition (CVD) growth process.  
Indications of post-growth treatment.