



ELECTRONIC COPY

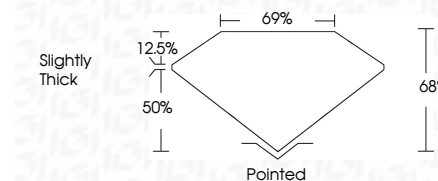
LG782605818
Report verification at igi.org



March 14, 2026
IGI Report Number **LG782605818**
Description **LABORATORY GROWN DIAMOND**
Shape and Cutting Style **CUT CORNERED
RECTANGULAR MODIFIED
BRILLIANT**
Measurements **10.98 X 8.06 X 5.48 MM**

GRADING RESULTS

Carat Weight **4.19 CARATS**
Color Grade **D**
Clarity Grade **VVS 2**



ADDITIONAL GRADING INFORMATION

Polish **EXCELLENT**
Symmetry **EXCELLENT**
Fluorescence **NONE**
Inscription(s) **IGI LG782605818**
Comments: This Laboratory Grown Diamond was created by Chemical Vapor Deposition (CVD) growth process. Type IIa



March 14, 2026
IGI Report No LG782605818
CUT CORNERED RECT. MODIFIED BRILLIANT
4.19 CARATS
D
4.19 CARATS
D
VVS 2
68%
50%
Slightly Thick
Pointed
EXCELLENT
EXCELLENT
NONE
IGI LG782605818
Comments: This Laboratory Grown Diamond was created by Chemical Vapor Deposition (CVD) growth process. Type IIa

THE LABORATORY GROWN DIAMOND WAS CREATED BY CHEMICAL VAPOR DEPOSITION (CVD) GROWTH PROCESS.

LABORATORY GROWN DIAMOND REPORT

March 14, 2026
IGI Report Number **LG782605818**
Description **LABORATORY GROWN DIAMOND**
Shape and Cutting Style **CUT CORNERED RECTANGULAR
MODIFIED BRILLIANT**
Measurements **10.98 X 8.06 X 5.48 MM**

GRADING RESULTS

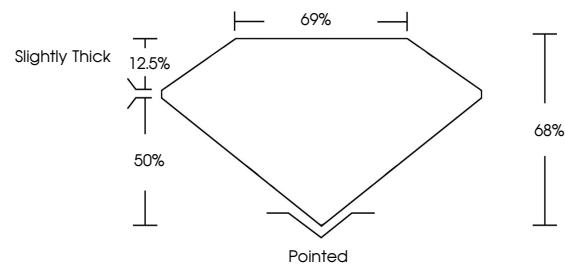
Carat Weight **4.19 CARATS**
Color Grade **D**
Clarity Grade **VVS 2**

ADDITIONAL GRADING INFORMATION

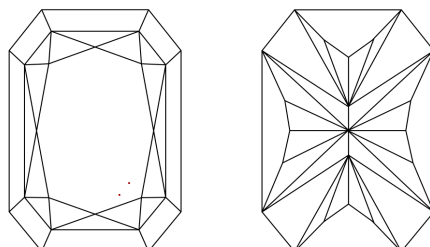
Polish **EXCELLENT**
Symmetry **EXCELLENT**
Fluorescence **NONE**
Inscription(s) **IGI LG782605818**

Comments: This Laboratory Grown Diamond was created by Chemical Vapor Deposition (CVD) growth process. Type IIa

PROPORTIONS

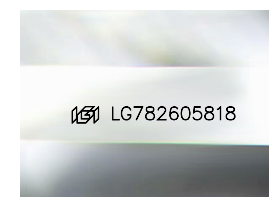


CLARITY CHARACTERISTICS



KEY TO SYMBOLS

Red symbols indicate internal characteristics.
Green symbols indicate external characteristics.



Sample Image Used

COLOR

D E F G H I J Faint Very Light Light

CLARITY

FL	IF	VVS ¹⁻²	VS ¹⁻²	SI ¹⁻²	I ¹⁻³
Flawless	Internally Flawless	Very Very Slightly Included	Very Slightly Included	Slightly Included	Included

