



**ELECTRONIC COPY**

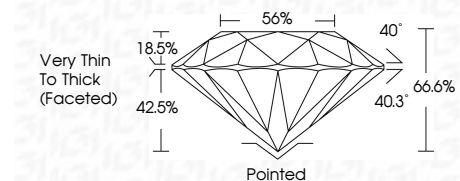
782694638  
Report verification at [igi.org](http://igi.org)



March 24, 2026  
IGI Report Number **782694638**  
Description **NATURAL DIAMOND**  
Shape and Cutting Style **ROUND BRILLIANT**  
Measurements **6.09 - 6.19 X 4.09 MM**

**GRADING RESULTS**

Carat Weight **1.01 CARAT**  
Color Grade **H**  
Clarity Grade **VS 2**  
Cut Grade **GOOD**



**ADDITIONAL GRADING INFORMATION**

Polish **EXCELLENT**  
Symmetry **VERY GOOD**  
Fluorescence **SLIGHT**  
Inscription(s) **IGI 782694638**

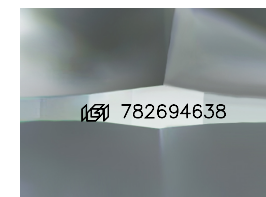
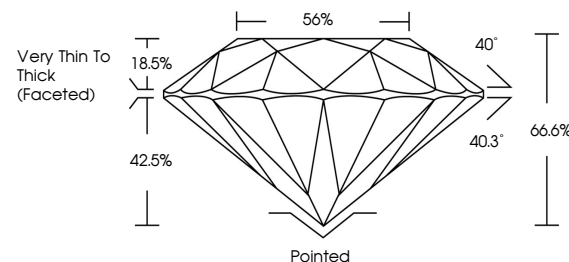


**IGI**



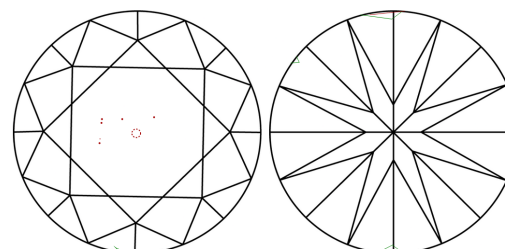
March 24, 2026	1.01 CARAT	H	VS 2	GOOD	66.6%	56%	Pointed	EXCELLENT	VERY GOOD	SLIGHT	IGI 782694638
IGI Report No 782694638	Carat Weight	Color Grade	Clarity Grade	Cut Grade	Depth	Table	Girdle	Polish	Symmetry	Fluorescence	Inscription(s)
ROUND BRILLIANT	6.09 - 6.19 X 4.09 MM						Very Thin To Thick (Faceted)				

**PROPORTIONS**



Sample Image Used

**CLARITY CHARACTERISTICS**



**KEY TO SYMBOLS**

Red symbols indicate internal characteristics.  
Green symbols indicate external characteristics.

**COLOR**

D - F	G - J	K - M	N - R	S - Z	FANCY
Colorless	Near Colorless	Slightly Tinted	Very Light Color	Light Color	

**CLARITY**

FL	IF	VVS 1-2	VS 1-2	SI 1-2	I 1-3
Flawless	Internally Flawless	Very Very Slightly Included	Very Slightly Included	Slightly Included	Included