



ELECTRONIC COPY

LG783630500
Report verification at igi.org



March 26, 2026
IGI Report Number **LG783630500**
Description **LABORATORY GROWN DIAMOND**
Shape and Cutting Style **CUT CORNERED
RECTANGULAR MIXED CUT**
Measurements **9.82 X 7.11 X 4.54 MM**
GRADING RESULTS
Carat Weight **3.03 CARATS**
Color Grade **FANCY VIVID YELLOW**
Clarity Grade **VS 1**

March 26, 2026
IGI Report Number **LG783630500**
Description **LABORATORY GROWN DIAMOND**
Shape and Cutting Style **CUT CORNERED RECTANGULAR
MIXED CUT**
Measurements **9.82 X 7.11 X 4.54 MM**

GRADING RESULTS

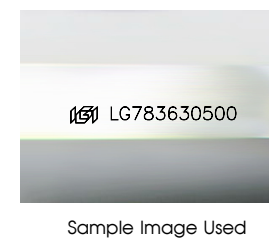
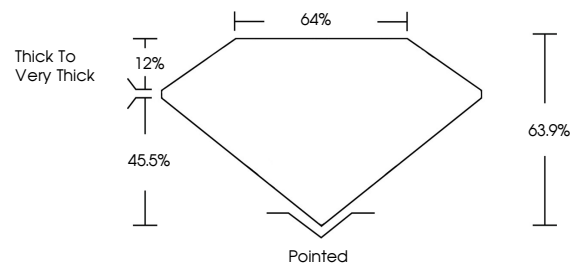
Carat Weight **3.03 CARATS**
Color Grade **FANCY VIVID YELLOW**
Clarity Grade **VS 1**

ADDITIONAL GRADING INFORMATION

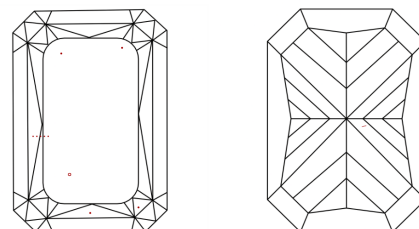
Polish **EXCELLENT**
Symmetry **EXCELLENT**
Fluorescence **NONE**
Inscription(s) **IGI LG783630500**

Comments: This Laboratory Grown Diamond was created by Chemical Vapor Deposition (CVD) growth process.

PROPORTIONS



CLARITY CHARACTERISTICS



KEY TO SYMBOLS

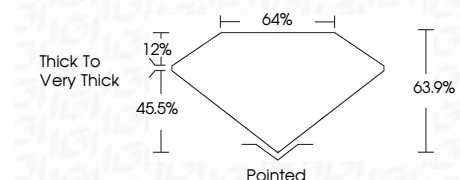
Red symbols indicate internal characteristics.
Green symbols indicate external characteristics.

COLOR

D E F G H I J Faint Very Light Light

CLARITY

| FL | IF | VS ¹⁻² | VS ¹⁻² | SI ¹⁻² | I ¹⁻³ |
|----------|---------------------|-----------------------------|------------------------|-------------------|------------------|
| Flawless | Internally Flawless | Very Very Slightly Included | Very Slightly Included | Slightly Included | Included |



ADDITIONAL GRADING INFORMATION

Polish **EXCELLENT**
Symmetry **EXCELLENT**
Fluorescence **NONE**
Inscription(s) **IGI LG783630500**
Comments: This Laboratory Grown Diamond was created by Chemical Vapor Deposition (CVD) growth process.



March 26, 2026
IGI Report No **LG783630500**
CUT CORNERED RECT. MIXED CUT
9.82 X 7.11 X 4.54 MM
Carat Weight **3.03 CARATS**
Color Grade **FANCY VIVID YELLOW**
Clarity Grade **VS 1**
Depth **45.5%**
Table **12%**
Girdle **63.9%**
Thick to Very Thick
Culet **Pointed**
Polish **EXCELLENT**
Symmetry **EXCELLENT**
Fluorescence **NONE**
Inscription(s) **IGI LG783630500**
Comments: This Laboratory Grown Diamond was created by Chemical Vapor Deposition (CVD) growth process.