



**ELECTRONIC COPY**

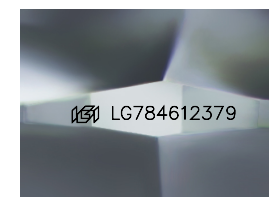
LG784612379  
Report verification at igi.org



March 31, 2026  
IGI Report Number **LG784612379**  
Description **LABORATORY GROWN DIAMOND**  
Shape and Cutting Style **SQUARE CUSHION MODIFIED  
BRILLIANT**  
Measurements **13.37 X 13.06 X 7.86 MM**

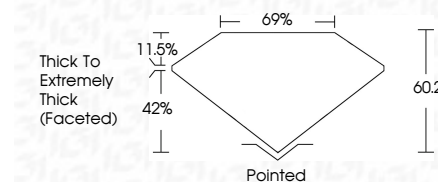
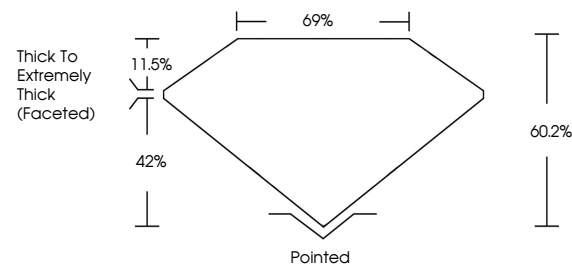
**GRADING RESULTS**

Carat Weight **14.02 CARATS**  
Color Grade **D**  
Clarity Grade **VS 1**



Sample Image Used

**PROPORTIONS**



**ADDITIONAL GRADING INFORMATION**

Polish **EXCELLENT**  
Symmetry **VERY GOOD**  
Fluorescence **NONE**  
Inscription(s) **IGI LG784612379**  
Comments: This Laboratory Grown Diamond was created by Chemical Vapor Deposition (CVD) growth process. Type IIa



**COLOR**

D E F G H I J Faint Very Light Light

**CLARITY**

FL	IF	VS <sup>1-2</sup>	VS <sup>1-2</sup>	SI <sup>1-2</sup>	I <sup>1-3</sup>
Flawless	Internally Flawless	Very Very Slightly Included	Very Slightly Included	Slightly Included	Included



March 31, 2026  
IGI Report No LG784612379  
**SQUARE CUSHION MODIFIED BRILLIANT**  
13.37 X 13.06 X 7.86 MM  
Carat Weight **14.02 CARATS**  
Color Grade **D**  
Clarity Grade **VS 1**  
Depth **60.2%**  
Table **69%**  
Girdle **Thick To Extremely Thick (Faceted)**  
Culet **Pointed**  
Polish **EXCELLENT**  
Symmetry **VERY GOOD**  
Fluorescence **NONE**  
Inscription(s) **IGI LG784612379**  
Comments: This Laboratory Grown Diamond was created by Chemical Vapor Deposition (CVD) growth process. Type IIa