



**ELECTRONIC COPY**

LG784615042  
Report verification at [igi.org](http://igi.org)



March 30, 2026  
IGI Report Number **LG784615042**  
Description **LABORATORY GROWN DIAMOND**  
Shape and Cutting Style **CUSHION MIXED CUT**  
Measurements **11.12 X 8.62 X 5.97 MM**  
**GRADING RESULTS**  
Carat Weight **5.31 CARATS**  
Color Grade **FANCY VIVID YELLOW**  
Clarity Grade **VS 1**

March 30, 2026  
IGI Report Number **LG784615042**  
Description **LABORATORY GROWN DIAMOND**  
Shape and Cutting Style **CUSHION MIXED CUT**  
Measurements **11.12 X 8.62 X 5.97 MM**

**GRADING RESULTS**

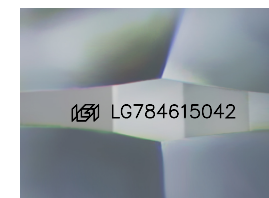
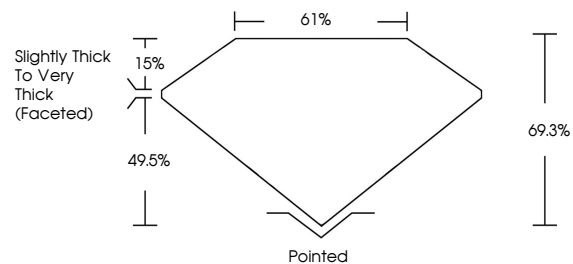
Carat Weight **5.31 CARATS**  
Color Grade **FANCY VIVID YELLOW**  
Clarity Grade **VS 1**

**ADDITIONAL GRADING INFORMATION**

Polish **EXCELLENT**  
Symmetry **EXCELLENT**  
Fluorescence **NONE**  
Inscription(s) **LG784615042**

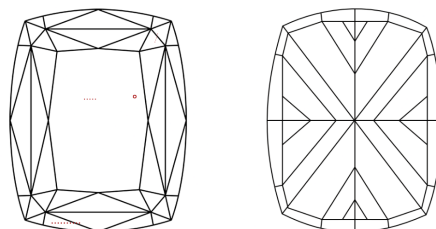
Comments: This Laboratory Grown Diamond was created by Chemical Vapor Deposition (CVD) growth process.

**PROPORTIONS**



Sample Image Used

**CLARITY CHARACTERISTICS**



**KEY TO SYMBOLS**

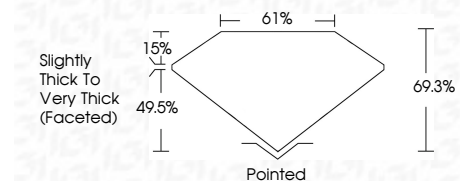
Red symbols indicate internal characteristics.  
Green symbols indicate external characteristics.

**COLOR**

D E F G H I J Faint Very Light Light

**CLARITY**

FL	IF	VS <sup>1-2</sup>	VS <sup>1-2</sup>	SI <sup>1-2</sup>	I <sup>1-3</sup>
Flawless	Internally Flawless	Very Very Slightly Included	Very Slightly Included	Slightly Included	Included



**ADDITIONAL GRADING INFORMATION**

Polish **EXCELLENT**  
Symmetry **EXCELLENT**  
Fluorescence **NONE**  
Inscription(s) **LG784615042**  
Comments: This Laboratory Grown Diamond was created by Chemical Vapor Deposition (CVD) growth process.



**IGI**



March 30, 2026  
IGI Report No LG784615042  
**CUSHION MIXED CUT**  
11.12 X 8.62 X 5.97 MM  
5.31 CARATS  
FANCY VIVID YELLOW  
VS 1  
69.3%  
61%  
Slightly Thick To Very Thick (Faceted)  
Pointed  
EXCELLENT  
EXCELLENT  
NONE  
None  
 LG784615042  
Comments: This Laboratory Grown Diamond was created by Chemical Vapor Deposition (CVD) growth process.