



**ELECTRONIC COPY**

LG784647789  
Report verification at igi.org



March 21, 2026  
IGI Report Number **LG784647789**  
Description **LABORATORY GROWN DIAMOND**  
Shape and Cutting Style **ROUND BRILLIANT**  
Measurements **7.25 - 7.30 X 4.61 MM**  
**GRADING RESULTS**  
Carat Weight **1.50 CARAT**  
Color Grade **F**  
Clarity Grade **VS 1**  
Cut Grade **EXCELLENT**

**LABORATORY GROWN DIAMOND REPORT**

March 21, 2026  
IGI Report Number **LG784647789**  
Description **LABORATORY GROWN DIAMOND**  
Shape and Cutting Style **ROUND BRILLIANT**  
Measurements **7.25 - 7.30 X 4.61 MM**

**GRADING RESULTS**

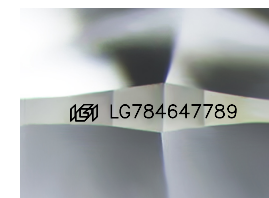
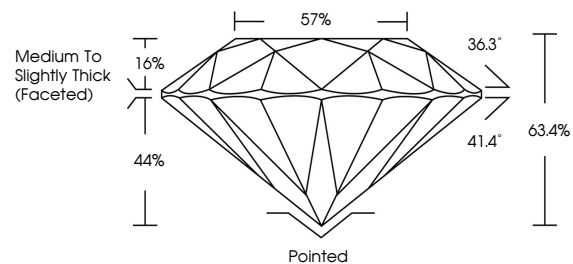
Carat Weight **1.50 CARAT**  
Color Grade **F**  
Clarity Grade **VS 1**  
Cut Grade **EXCELLENT**

**ADDITIONAL GRADING INFORMATION**

Polish **EXCELLENT**  
Symmetry **EXCELLENT**  
Fluorescence **NONE**  
Inscription(s) **IGI LG784647789**

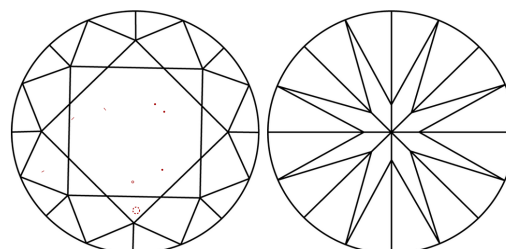
Comments: This Laboratory Grown Diamond was created by Chemical Vapor Deposition (CVD) growth process.  
Type IIa

**PROPORTIONS**



Sample Image Used

**CLARITY CHARACTERISTICS**



**KEY TO SYMBOLS**

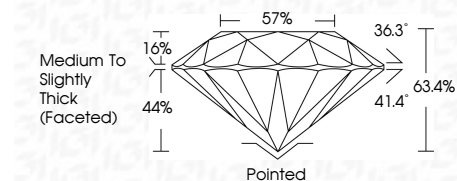
Red symbols indicate internal characteristics.  
Green symbols indicate external characteristics.

**COLOR**

D E F G H I J Faint Very Light Light

**CLARITY**

FL	IF	VS <sup>1-2</sup>	VS <sup>1-2</sup>	SI <sup>1-2</sup>	I <sup>1-3</sup>
Flawless	Internally Flawless	Very Very Slightly Included	Very Slightly Included	Slightly Included	Included



**ADDITIONAL GRADING INFORMATION**

Polish **EXCELLENT**  
Symmetry **EXCELLENT**  
Fluorescence **NONE**  
Inscription(s) **IGI LG784647789**  
Comments: This Laboratory Grown Diamond was created by Chemical Vapor Deposition (CVD) growth process.  
Type IIa



March 21, 2026  
IGI Report No **LG784647789**  
**ROUND BRILLIANT**  
Carat Weight **1.50 CARAT**  
Color Grade **F**  
Clarity Grade **VS 1**  
Depth **EXCELLENT**  
Table **63.4%**  
Girdle **57%**  
Medium To Slightly Thick (Faceted)  
Culet **Pointed**  
Polish **EXCELLENT**  
Symmetry **EXCELLENT**  
Fluorescence **NONE**  
Inscription(s) **IGI LG784647789**  
Comments: This Laboratory Grown Diamond was created by Chemical Vapor Deposition (CVD) growth process.  
Type IIa