



**ELECTRONIC COPY**

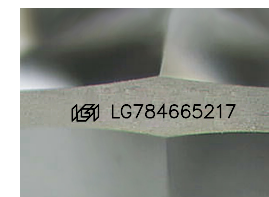
LG784665217  
Report verification at igi.org



March 19, 2026  
IGI Report Number **LG784665217**  
Description **LABORATORY GROWN DIAMOND**  
Shape and Cutting Style **HEXAGONAL MIXED CUT**  
Measurements **16.05 X 8.01 X 4.90 MM**

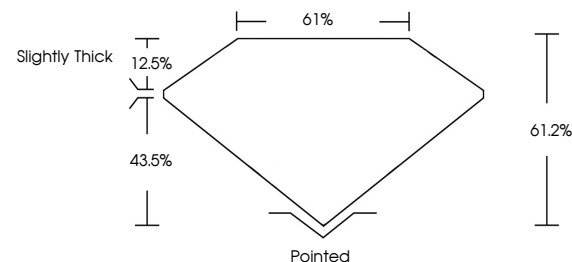
**GRADING RESULTS**

Carat Weight **4.57 CARATS**  
Color Grade **F**  
Clarity Grade **VVS 2**

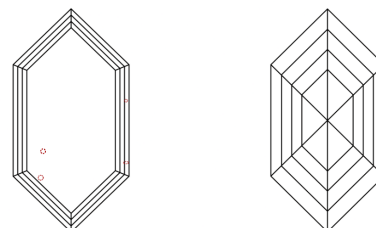


Sample Image Used

**PROPORTIONS**



**CLARITY CHARACTERISTICS**



**KEY TO SYMBOLS**

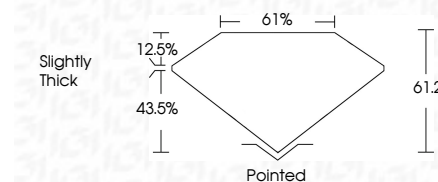
Red symbols indicate internal characteristics.  
Green symbols indicate external characteristics.

**COLOR**

D E F G H I J Faint Very Light Light

**CLARITY**

FL	IF	VVS <sup>1-2</sup>	VS <sup>1-2</sup>	SI <sup>1-2</sup>	I <sup>1-3</sup>
Flawless	Internally Flawless	Very Very Slightly Included	Very Slightly Included	Slightly Included	Included



**ADDITIONAL GRADING INFORMATION**

Polish **EXCELLENT**  
Symmetry **EXCELLENT**  
Fluorescence **NONE**  
Inscription(s) **IGI LG784665217**  
Comments: This Laboratory Grown Diamond was created by Chemical Vapor Deposition (CVD) growth process. Type IIa



**IGI**



March 19, 2026  
IGI Report No **LG784665217**  
**HEXAGONAL MIXED CUT**  
16.05 X 8.01 X 4.90 MM  
Carat Weight **4.57 CARATS**  
Color Grade **F**  
Clarity Grade **VVS 2**  
Depth **43.5%**  
Table **12.5%**  
Girdle **61%**  
Culet **Slightly Thick**  
Polish **Pointed**  
Symmetry **EXCELLENT**  
Fluorescence **EXCELLENT**  
Inscription(s) **NONE**  
**IGI LG784665217**  
Comments: This Laboratory Grown Diamond was created by Chemical Vapor Deposition (CVD) growth process. Type IIa