



**ELECTRONIC COPY**

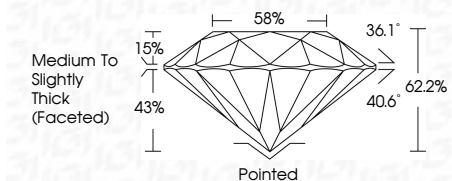
784680381  
Report verification at [igi.org](http://igi.org)



April 20, 2026  
IGI Report Number **784680381**  
Description **NATURAL DIAMOND**  
Shape and Cutting Style **ROUND BRILLIANT**  
Measurements **9.43 - 9.47 X 5.88 MM**

**GRADING RESULTS**

Carat Weight **3.31 CARATS**  
Color Grade **I**  
Clarity Grade **VS 2**  
Cut Grade **EXCELLENT**



**ADDITIONAL GRADING INFORMATION**

Polish **EXCELLENT**  
Symmetry **EXCELLENT**  
Fluorescence **NONE**  
Inscription(s) **IGI 784680381**  
Comments: IDEAL CUT ROUND BRILLIANT



**IGI**

April 20, 2026  
IGI Report No 784680381  
**ROUND BRILLIANT**  
9.43 - 9.47 X 5.88 MM  
3.31 CARATS  
I  
EXCELLENT  
VS 2  
EXCELLENT  
62.2%  
58%  
Medium To Slightly Thick (Faceted)  
Pointed  
EXCELLENT  
EXCELLENT  
NONE  
IGI 784680381  
Comments: IDEAL CUT ROUND BRILLIANT

**DIAMOND REPORT**

April 20, 2026  
IGI Report Number **784680381**  
Description **NATURAL DIAMOND**  
Shape and Cutting Style **ROUND BRILLIANT**  
Measurements **9.43 - 9.47 X 5.88 MM**

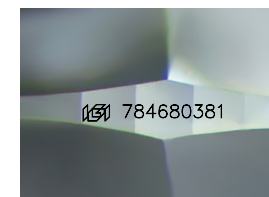
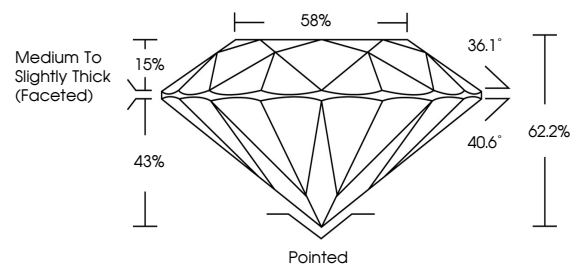
**GRADING RESULTS**

Carat Weight **3.31 CARATS**  
Color Grade **I**  
Clarity Grade **VS 2**  
Cut Grade **EXCELLENT**

**ADDITIONAL GRADING INFORMATION**

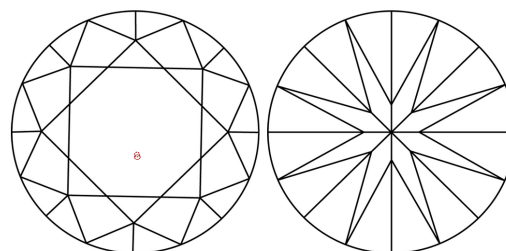
Polish **EXCELLENT**  
Symmetry **EXCELLENT**  
Fluorescence **NONE**  
Inscription(s) **IGI 784680381**  
Comments: IDEAL CUT ROUND BRILLIANT

**PROPORTIONS**



Sample Image Used

**CLARITY CHARACTERISTICS**



**KEY TO SYMBOLS**

Red symbols indicate internal characteristics.  
Green symbols indicate external characteristics.

**COLOR**

D - F	G - J	K - M	N - R	S - Z	FANCY
Colorless	Near Colorless	Slightly Tinted	Very Light Color	Light Color	

**CLARITY**

FL	IF	VVS 1-2	VS 1-2	SI 1-2	I 1-3
Flawless	Internally Flawless	Very Very Slightly Included	Very Slightly Included	Slightly Included	Included

