



ELECTRONIC COPY

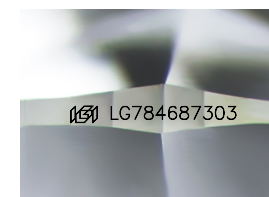
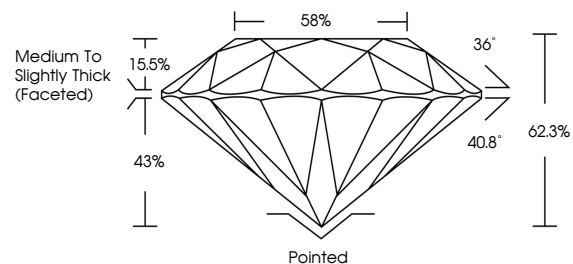
LG784687303
Report verification at igi.org



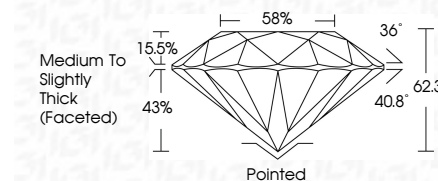
March 23, 2026
IGI Report Number **LG784687303**
Description **LABORATORY GROWN DIAMOND**
Shape and Cutting Style **ROUND BRILLIANT**
Measurements **7.46 - 7.48 X 4.65 MM**
GRADING RESULTS
Carat Weight **1.59 CARAT**
Color Grade **D**
Clarity Grade **VVS 2**
Cut Grade **IDEAL**

March 23, 2026
IGI Report Number **LG784687303**
Description **LABORATORY GROWN DIAMOND**
Shape and Cutting Style **ROUND BRILLIANT**
Measurements **7.46 - 7.48 X 4.65 MM**
GRADING RESULTS
Carat Weight **1.59 CARAT**
Color Grade **D**
Clarity Grade **VVS 2**
Cut Grade **IDEAL**

PROPORTIONS



Sample Image Used



ADDITIONAL GRADING INFORMATION

Polish **EXCELLENT**
Symmetry **EXCELLENT**
Fluorescence **NONE**
Inscription(s) **IGI LG784687303**

Comments: This Laboratory Grown Diamond was created by Chemical Vapor Deposition (CVD) growth process. Type IIa

ADDITIONAL GRADING INFORMATION

Polish **EXCELLENT**
Symmetry **EXCELLENT**
Fluorescence **NONE**
Inscription(s) **IGI LG784687303**
Comments: This Laboratory Grown Diamond was created by Chemical Vapor Deposition (CVD) growth process. Type IIa

COLOR

D E F G H I J Faint Very Light Light

CLARITY

FL	IF	VS ¹⁻²	VS ¹⁻²	SI ¹⁻²	I ¹⁻³
Flawless	Internally Flawless	Very Very Slightly Included	Very Slightly Included	Slightly Included	Included



IGI



March 23, 2026
IGI Report No LG784687303
ROUND BRILLIANT
7.46 - 7.48 X 4.65 MM
1.59 CARAT
Color Grade D
Clarity Grade VVS 2
Depth 62.3%
Table 58%
Girdle Medium To Slightly Thick (Faceted)
Culet Pointed
Polish EXCELLENT
Symmetry EXCELLENT
Fluorescence NONE
Inscriptions(s) IGI LG784687303
Comments: This Laboratory Grown Diamond was created by Chemical Vapor Deposition (CVD) growth process. Type IIa