



**ELECTRONIC COPY**

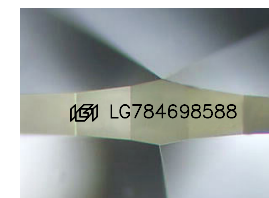
LG784698588  
Report verification at igi.org



March 28, 2026  
IGI Report Number **LG784698588**  
Description **LABORATORY GROWN DIAMOND**

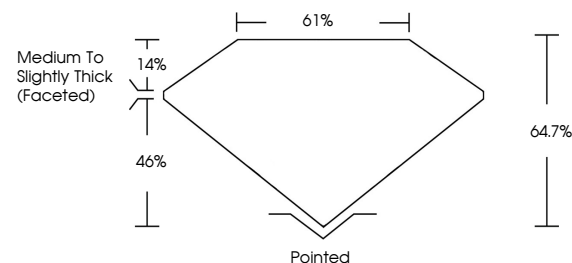
Shape and Cutting Style **PEAR BRILLIANT**  
Measurements **12.60 X 7.84 X 5.07 MM**

**GRADING RESULTS**  
Carat Weight **3.00 CARATS**  
Color Grade **G**  
Clarity Grade **VVS 2**

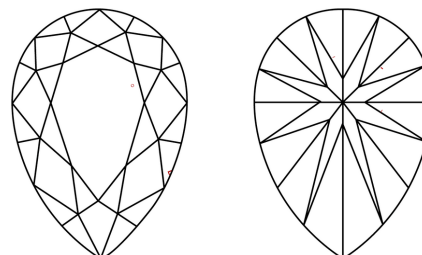


Sample Image Used

**PROPORTIONS**



**CLARITY CHARACTERISTICS**



**KEY TO SYMBOLS**

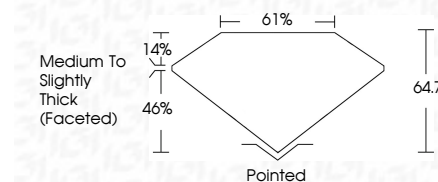
Red symbols indicate internal characteristics.  
Green symbols indicate external characteristics.

**COLOR**

D E F G H I J Faint Very Light Light

**CLARITY**

| FL       | IF                  | VS <sup>1-2</sup>           | VS <sup>1-2</sup>      | SI <sup>1-2</sup> | I <sup>1-3</sup> |
|----------|---------------------|-----------------------------|------------------------|-------------------|------------------|
| Flawless | Internally Flawless | Very Very Slightly Included | Very Slightly Included | Slightly Included | Included         |



**ADDITIONAL GRADING INFORMATION**

Polish **EXCELLENT**  
Symmetry **EXCELLENT**  
Fluorescence **NONE**  
Inscription(s) **IGI LG784698588**  
Comments: This Laboratory Grown Diamond was created by Chemical Vapor Deposition (CVD) growth process. Type IIa



**IGI**



March 28, 2026  
IGI Report No LG784698588  
PEAR BRILLIANT  
3.00 CARATS  
G  
12.60 X 7.84 X 5.07 MM  
Carat Weight  
Color Grade  
Clarity Grade  
Depth  
Table  
Girdle  
Medium to Slightly Thick (Faceted)  
Culet  
Polish  
Symmetry  
Fluorescence  
Inscription(s)  
Pointed  
EXCELLENT  
EXCELLENT  
NONE  
IGI LG784698588  
Comments: This Laboratory Grown Diamond was created by Chemical Vapor Deposition (CVD) growth process. Type IIa